

ANEXOS

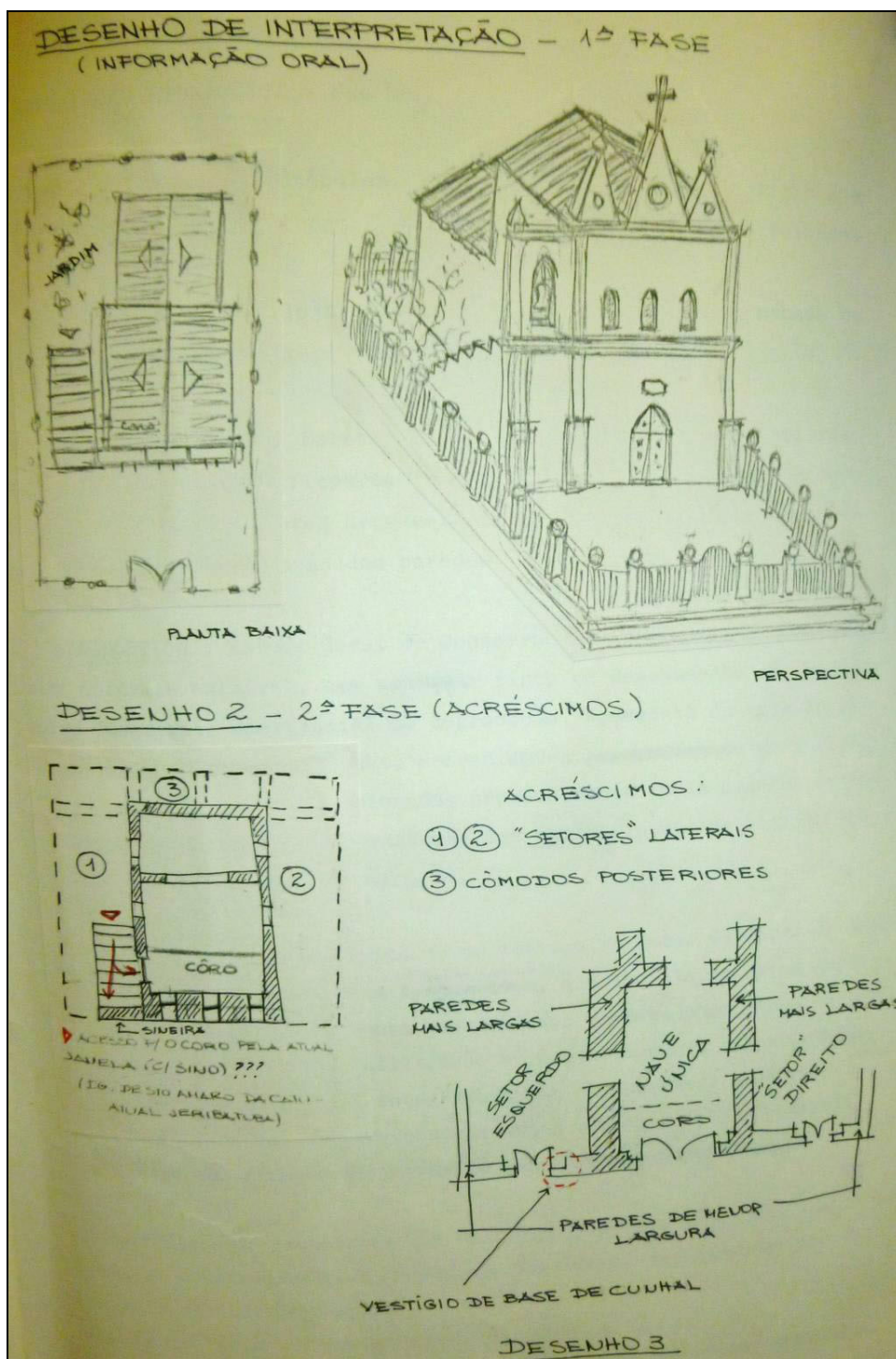
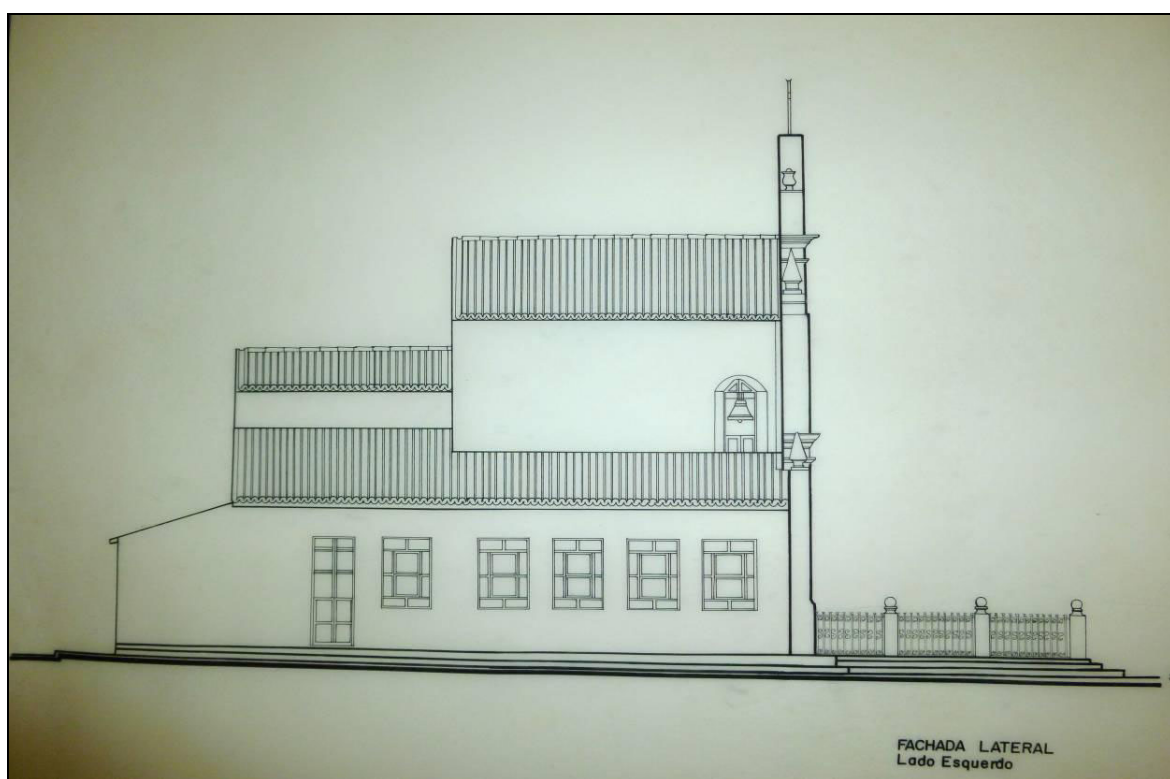
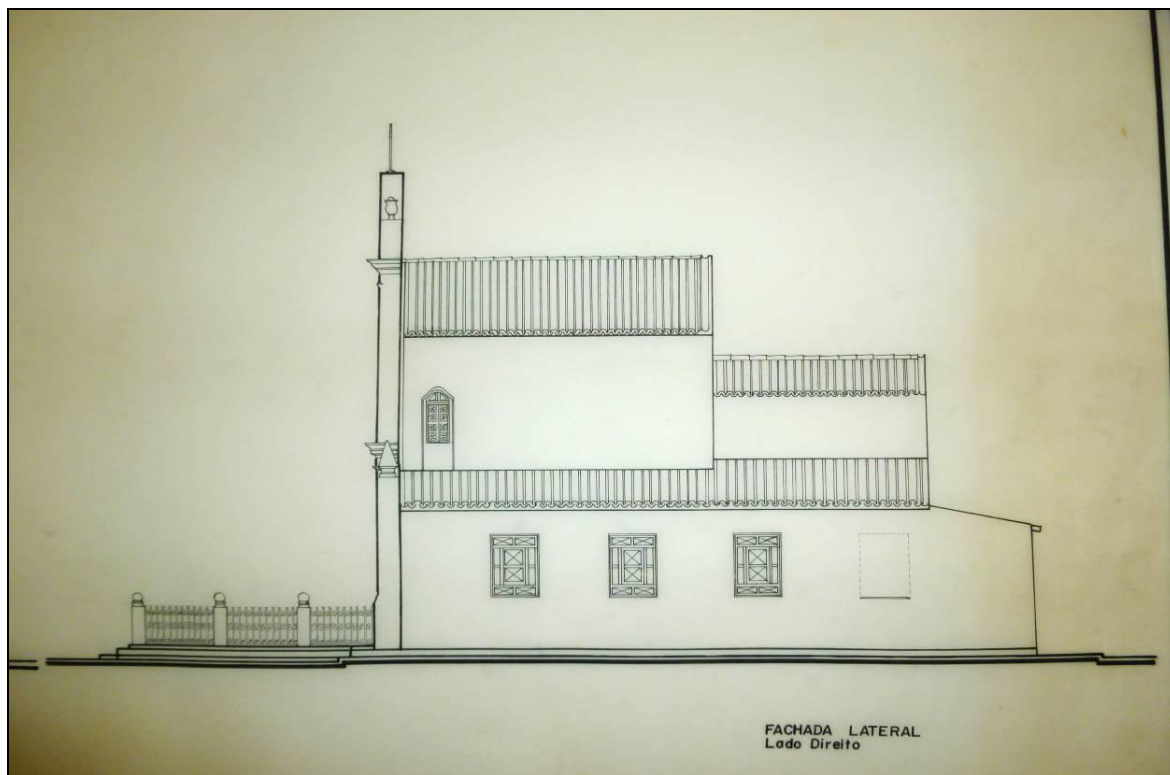
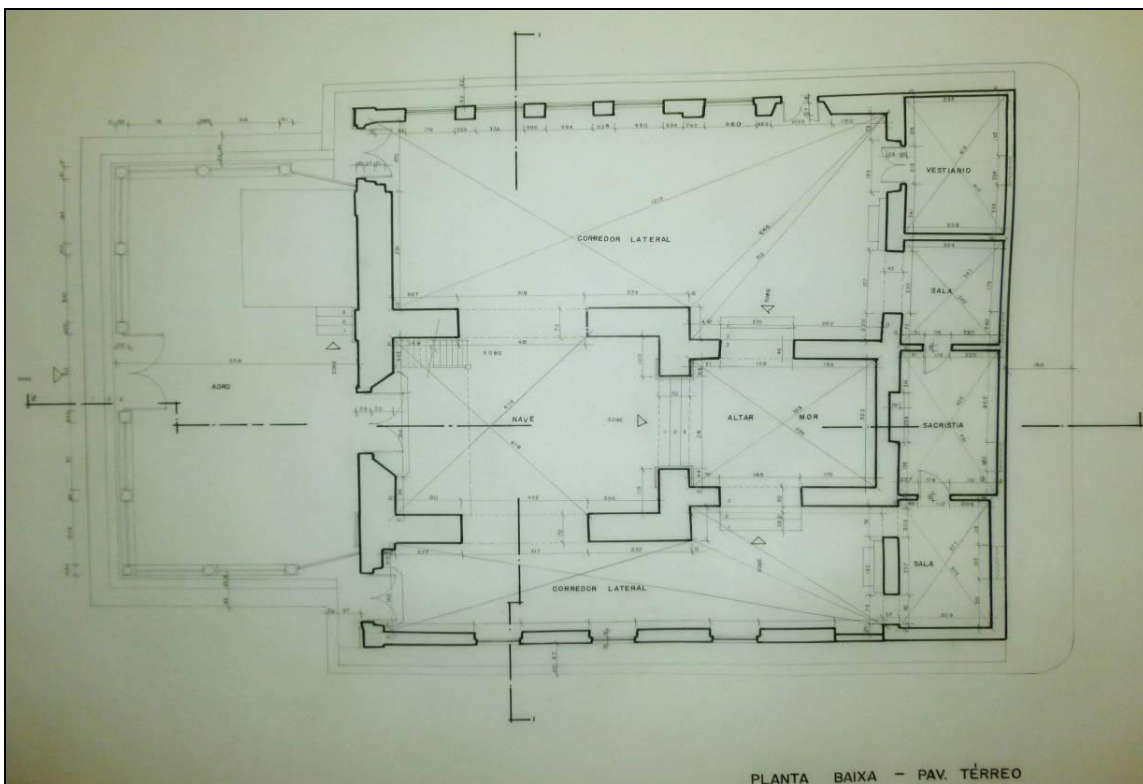
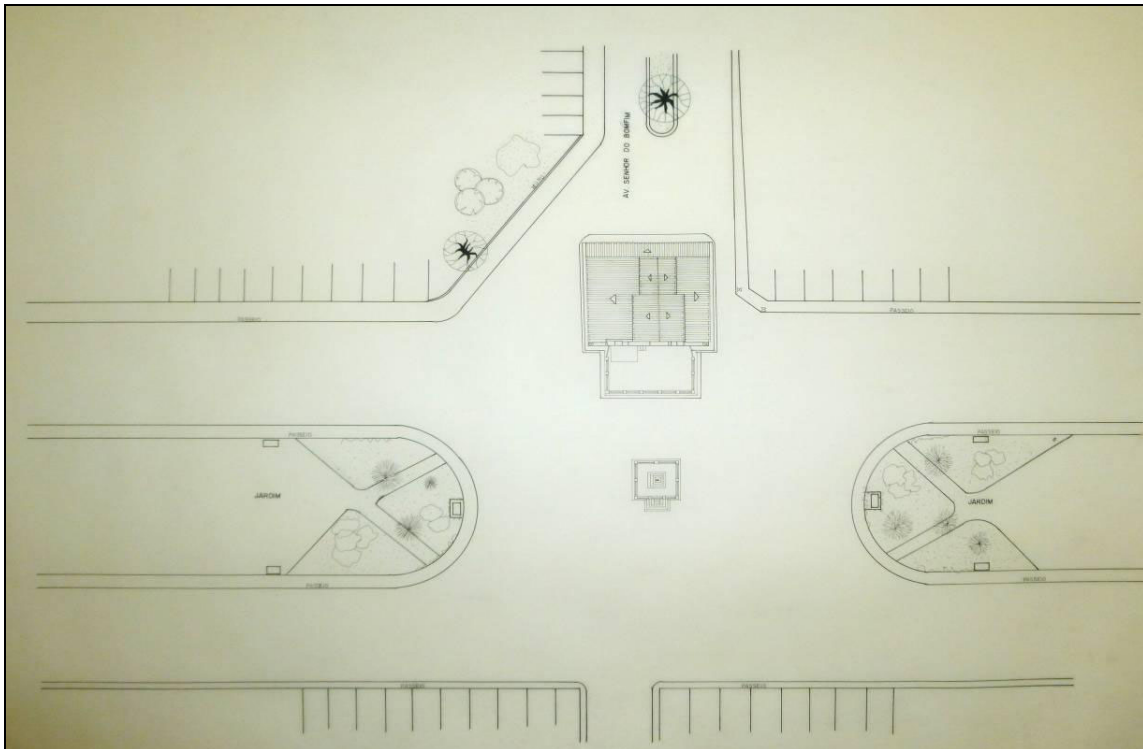


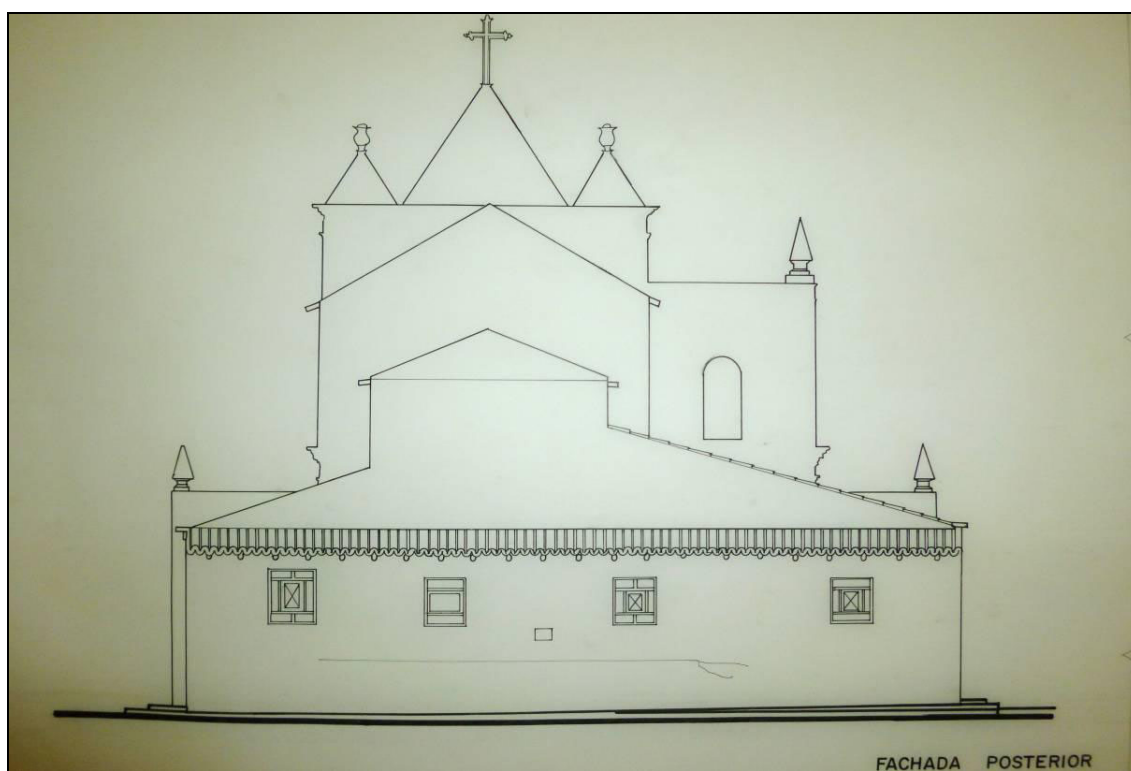
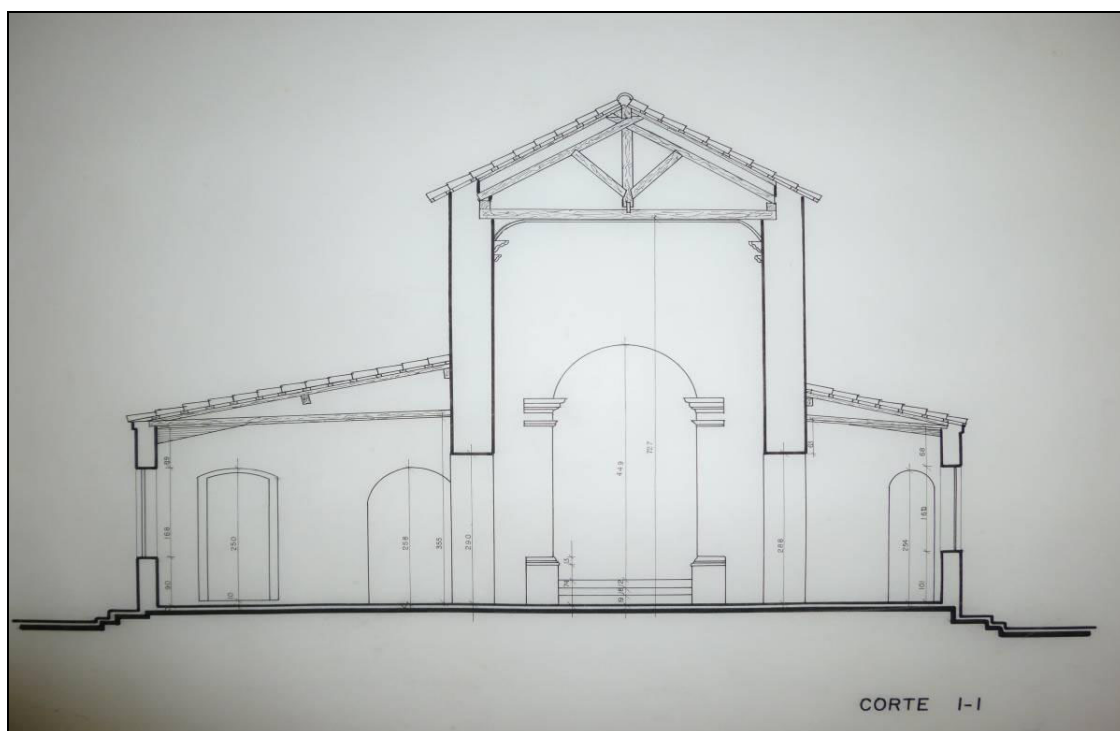
Imagem 168: Desenho de Interpretação da Igreja do Bom Jesus de Crisópolis.
 Autoria: Yumara Pessoa, 1987.
 Arquivos do IPAC.



Imagens 169 e 170: Fachada lateral direita e esquerda da Igreja do Bom Jesus de Crisópolis.
Arquivos do IPAC, 1987.



Imagens 171 e 172: Planta de Situação e Planta Baixa da Igreja do Bom Jesus de Crisópolis. Arquivos do IPAC, 1987.



Imagens 175 e 176: Corte 1-1 e Fachada Posterior da Igreja do Bom Jesus de Crisópolis.
Arquivos do IPAC, 1987.