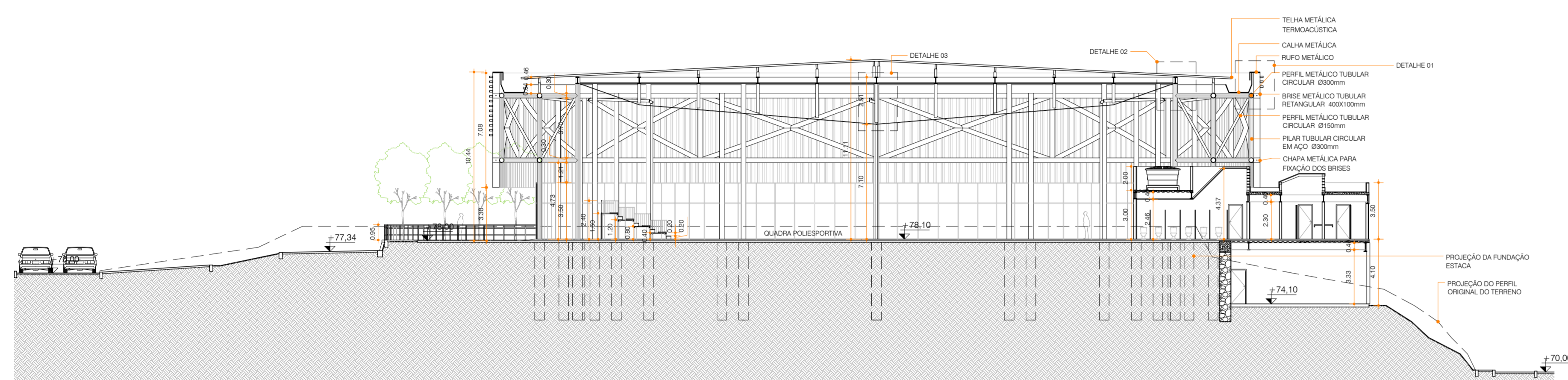
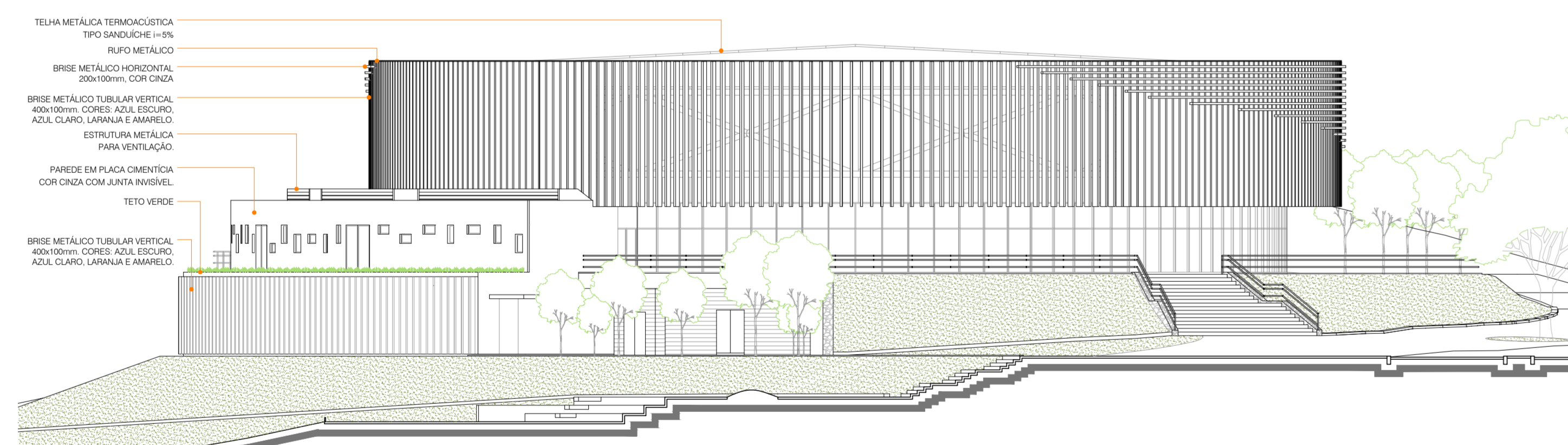


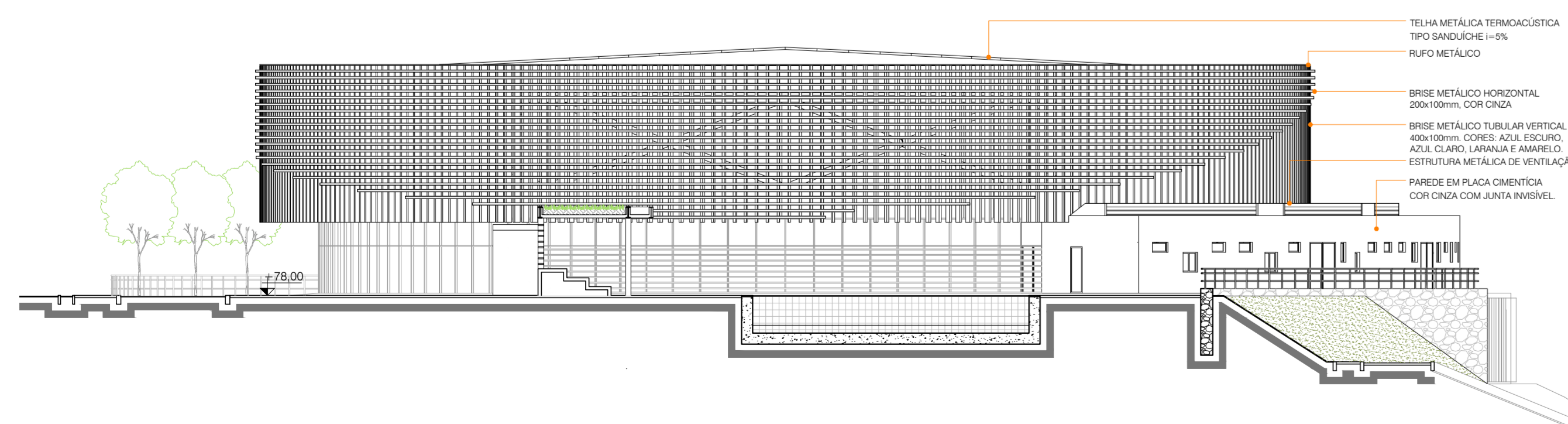
CORTE AA
1/200



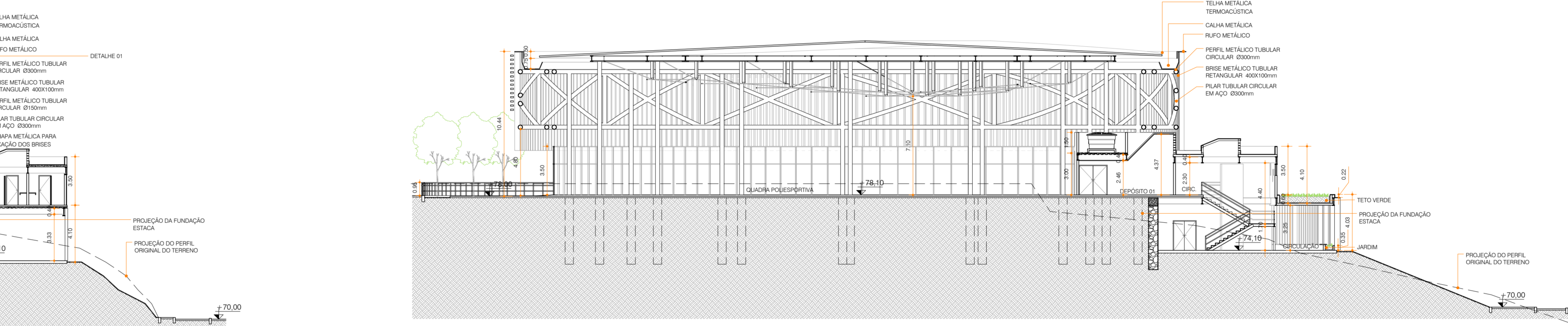
CORTE BB
1/200



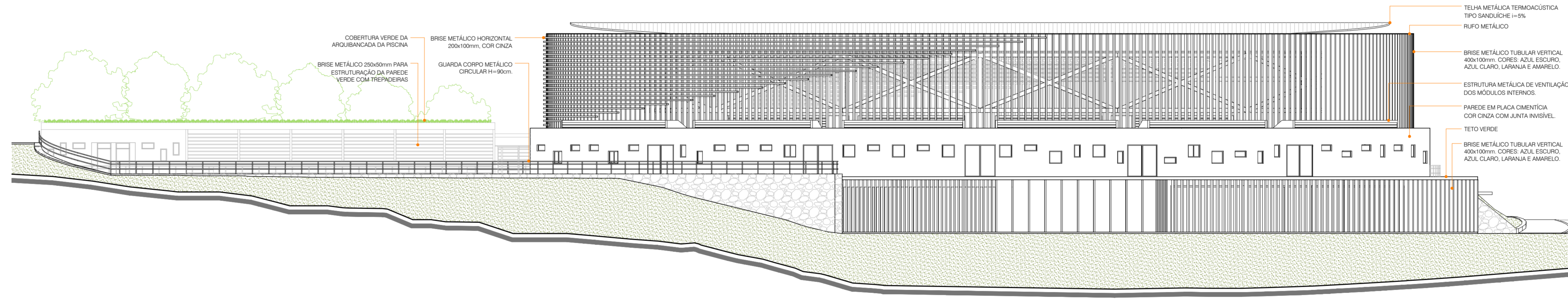
FACHADA OESTE
1/200



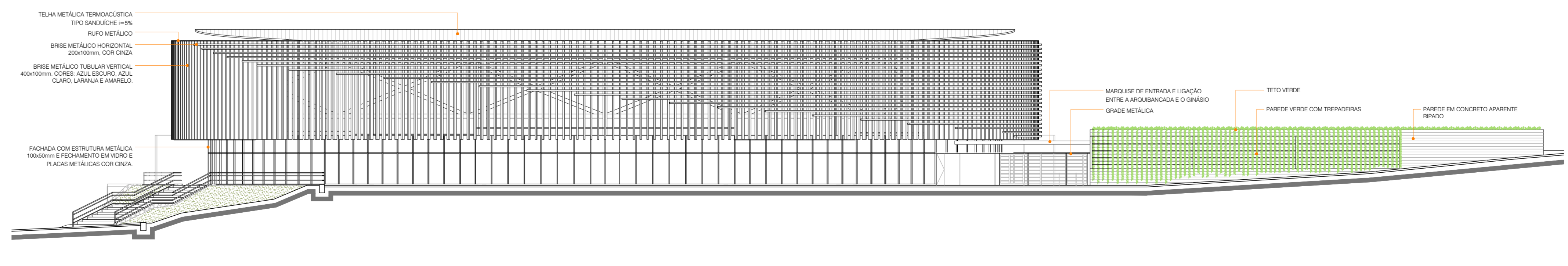
FACHADA LESTE
1/200



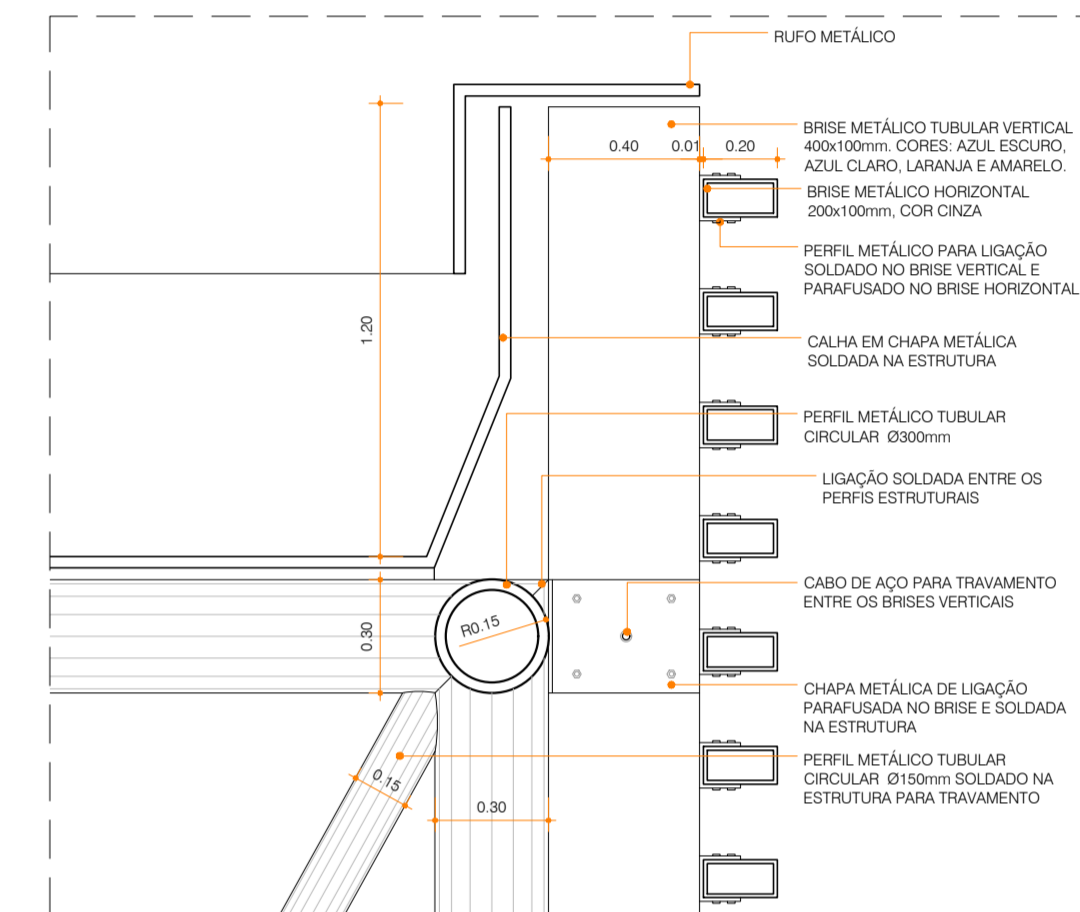
CORTE CC
1/200



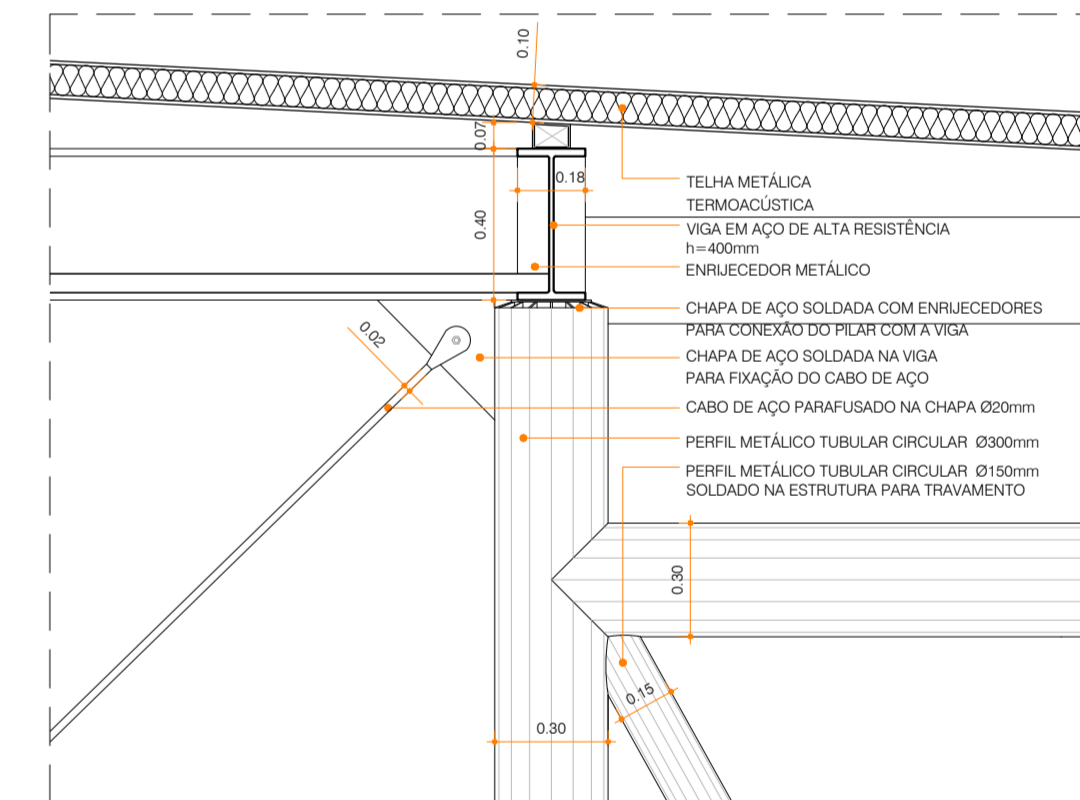
FACHADA SUL
1/200



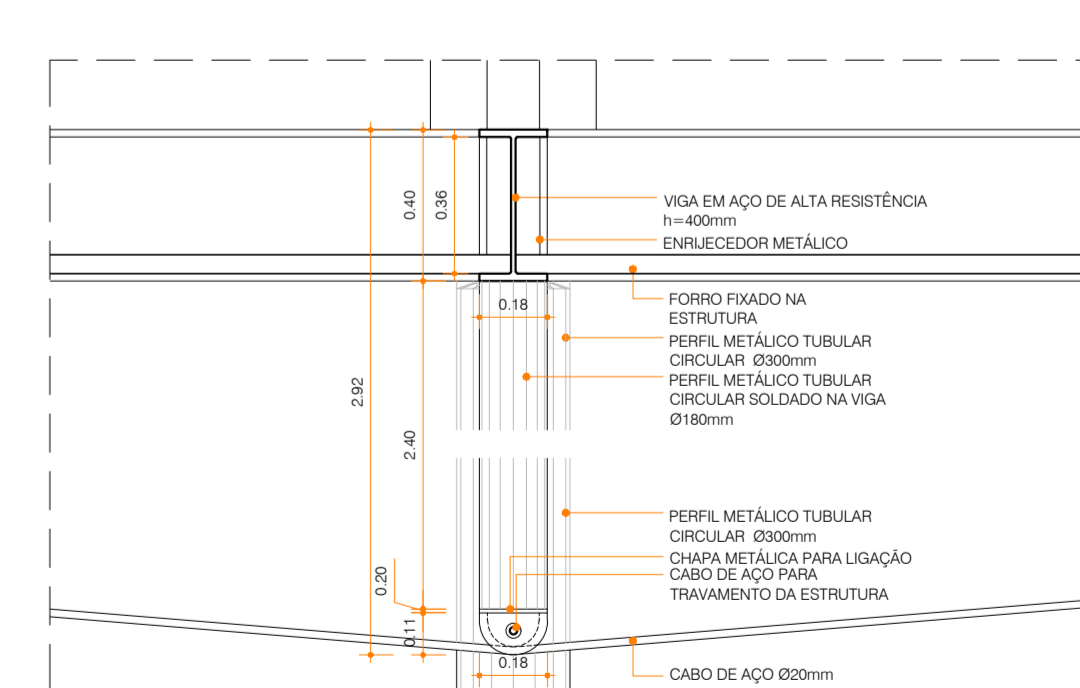
FACHADA NORTE
1/200



DETALHE 01
1/20



DETALHE 02
1/20



DETALHE 03
1/20

PROJETO: TRABALHO FINAL DE GRADUAÇÃO, FACULDADE DE ARQUITETURA-UFBA			
GINÁSIO POLIESPORTIVO EM PLATAFORMA			
PLANTA:	CORTES, FACHADAS E DETALHES		FOLHA:
			05/05
ENDEREÇO:	DATA:	REVISÃO:	
RUA ESMERALDA - PLATAFORMA, SALVADOR - BAHIA	28/08/2017	R00	
ALUNO:	ORIENTADORA:	REVISÃO:	ESCALA:
LÉO KIKUCHI	AKEMI TAHARA	R00	INDICADA