
An approach to assess risks of carbon geological storage technology

**Maísa Matos Paraguassú* and
George Câmara**

UFBA, Industrial Engineering Program,
Federal University of Bahia,
Rua Aristides Novis, No. 2, 40.210-630, Salvador, Bahia, Brazil
Email: maisamp6@gmail.com
Email: george@camaraconsultoria.com.br
*Corresponding author

Paulo Sérgio Rocha

UNIFACS,
Salvador University – Laureate International Universities,
Alameda das Espatódias, 915, 41.820-460, Salvador, Bahia, Brazil
Email: psrocha@qgep.com.br

José Célio Silveira Andrade

UFBA, Faculty of Business Administration,
Federal University of Bahia,
Av. Reitor Miguel Calmon, s/n, 41.100-903, Salvador, Bahia, Brazil
Email: jcelio.andrade@gmail.com
Email: celiosa@ufba.br

Abstract: Carbon geological storage (CGS) projects are designed to securely store carbon dioxide (CO₂) for thousands of years. Because of this, there are several studies to evaluate the potential risks of long-term storage of CO₂ in geological formations. This paper presents a new method for the qualitative risk assessment of CGS: the risk assessment of stored CO₂ (RA-CO₂) method. It consists of the systematic and structured identification of CO₂ release risk scenarios arising from: seal, well, and fault and fracture zones. The uncertainties associated to each mapped risk scenario and the risks are qualitatively evaluated using the RA-CO₂ method. The characteristics of the RA-CO₂ method enable a comprehensive understanding of the underground evolution and future behaviour of the CO₂ in various time scales and their influence on safety. For future studies, the validation of the proposed RA-CO₂ method using a real case study is recommended.

Keywords: risk assessment of stored CO₂; RA-CO₂ method; qualitative risk assessment; CO₂ leakage; CO₂ geological storage; CGS.

Reference to this paper should be made as follows: Paraguassú, M.M., Câmara, G., Rocha, P.S. and Andrade, J.C.S. (2015) 'An approach to assess risks of carbon geological storage technology', *Int. J. Global Warming*, Vol. 7, No. 1, pp.89–109.

Biographical notes: Máisa Matos Paraguassú received her Master's degree in Industrial Engineering at the Federal University of Bahia (UFBA) in Brazil. She is a Researcher at the Faculty of Business Administration. Her research interests are related to the development of CCS technology on a large scale in Brazil.

George Câmara received his PhD in Industrial Engineering at the Federal University of Bahia (UFBA) in Brazil. His experience and research interests include the area of energy with emphasis on regulation and climate change, CO₂ geological storage, global environmental governance, safety and quality.

Paulo Sérgio Rocha received his PhD in Petroleum Engineering at the University of Texas, Austin, USA. His experience and research interests include reservoir engineering, enhanced oil recovery, CO₂ geological storage, and CCS regulation.

José Célio Silveira Andrade received his PhD in Business Administration at the Federal University of Bahia (UFBA) in Brazil and his Post-Doctoral in Political Science and International Relations at the Université Laval, Québec, Canada. His research interests include global environmental governance, clean development mechanism, political and institutional strategies, social and environmental strategies and cleaner production.

1 Introduction

In recent years, the average temperature of the planet has increased due to the growing concentration of certain gases, called greenhouse gases (GHGs), in the atmosphere that retain heat. The presence of GHGs is important to control the earth's temperature and consequently life on Earth. However, the presence of too many GHGs can cause the temperature to increase uncontrollably and can alter the balance of energy transfers between the atmosphere, space, land, and oceans. Among the GHGs, anthropogenic CO₂ emissions are a major contributor to climate change and it made up 77% of total anthropogenic GHGs emissions between 1970 and 2004. According to the Intergovernmental Panel on Climate Change (IPCC) (2007), carbon dioxide (CO₂) is the most important of these gases and is taken as a reference.

According to Pacala and Socolow (2004), carbon capture and storage (CCS) technology may bring about a reduction in CO₂ of 25 GtC over 50 years. In this context, CCS has been discussed as one within of options to mitigate climate change by authors as, for example, Bachu (2000), IPCC (2005), Viebahn et al. (2007), Gerard and Wilson (2009), Praetorius and Schumacher (2009), Johnsson et al. (2010), and Einsiedel et al. (2013).

The risks of future carbon supply has been strongly debated, as is the viability of alternative energy sources, which do not seem to be able to maintain viability without government financial support (Wu et al., 2013). CCS can represent a 'technological bridge' between mitigation of climate change and sustainable energy chain, being an important option against the increase of GHG concentration and, at the same time, allowing the continued use of fossil fuels (Paltrinieri et al., 2013). The CCS life cycle includes steps ranging from the capture of an anthropogenic source of emissions followed by separation, dehydration, compression, transport to storage location and the

confinement itself. Among the places that have potential for CO₂ storage is storage in geological formations (carbon geological storage – CGS), addressed in this work (IPCC, 2005).

According to the International Energy Agency Greenhouse Gas R&D Programme (IEAGHG, 2009), sedimentary basins have characteristics for safe long-term storage as demonstrated by the existence of natural accumulations of CO₂ and by the presence of hydrocarbons trapped in reservoirs. However, due to the characteristics of CGS and the need to guarantee safe storage, risk assessment is a tool that can reveal the main scenarios of risk and identify potential threats and vulnerabilities that may compromise the performance of such systems. This knowledge can provide greater confidence and credibility to the efficiency of storage over hundreds of thousands to millions of years, in other words, on time scales appropriate for geological storage.

Increasingly, many nations and regions are expanding efforts to transition to post fossil carbon societies by changing to renewable energy based on systems, but every production, like every other human activity, involves risks (Wu et al., 2013). Thus, to better understand CO₂ leakage risks, the purpose of this paper is to present a new method for CGS qualitative risk assessment, called the risk assessment of stored CO₂ (RA-CO₂) method, based on the qualitative methods available in the literature. A comparative analysis between the existing methods and the main aspects that influence risk estimate have guided the development of the RA-CO₂ method.

2 Risks in CGS projects

The history of risk management has evolved since time immemorial. Levantine and Chinese traders prior to A.D. undoubtedly coped with the risk of sailing trade, as the Egyptians and Babylonians did before them. Technology has grown rapidly, a characteristic of our advancing civilisation, which provides many valuable tools, but also introduces new risks (Wu and Olson, 2010). The long-term CO₂ storage is one of these new technologies that will require a new variety of tools on risk evaluation to support the decision-making with innovative use of analytic techniques.

Risk can be obtained from the ‘combination of uncertainty and damage’, the ‘ratio between hazard and safeguard’, and the ‘combination of probability and consequence’ (Kaplan and Garrick, 1981; Leitch, 2010; Purdy, 2010). The combination of probability (or frequency) and consequence is the most widely used definition of risk. However, as CGS is built into a natural body (a geological formation) risk can be understood as a combination of natural and technological hazards because some causes of possible leaks do not only depend on the operation of technology as usually happens in industrial plants and consequently the causes are not perfectly known or understood (Morgado and Esteves, 2011). Engebø et al. (2013) also bring forward that risks associated with CO₂ capture and transport are satisfactorily managed when planned, different from risk related to storage, for which there is no large operational experience.

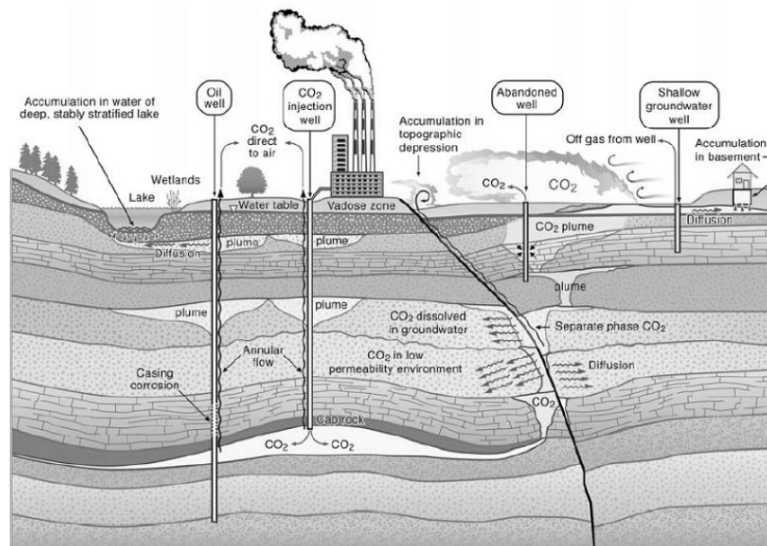
According to Wu and Olson (2009), complexity and uncertainty in many practical applications require new methods and tools what are not different for CO₂ long-term storage because geophysical and geomechanical changes in the geological formation, the presence of population and the reservoir features may modify the characteristics of CO₂ storage and consequently the complexity of risk analysis. For this reason, there is a difficulty of characterising or defining this natural system completely and this is among

the factors that contribute to risk estimate for the geological storage as well as to uncertainty regarding the site performance (CSLF,¹ 2009; Condor et al., 2011). The level of uncertainty, which also influence storage risk, is an important factor to estimate CO₂ storage capacity and is discussed by Bradshaw et al. (2007), Frailey and Finley (2009), and Szulczewski et al. (2012).

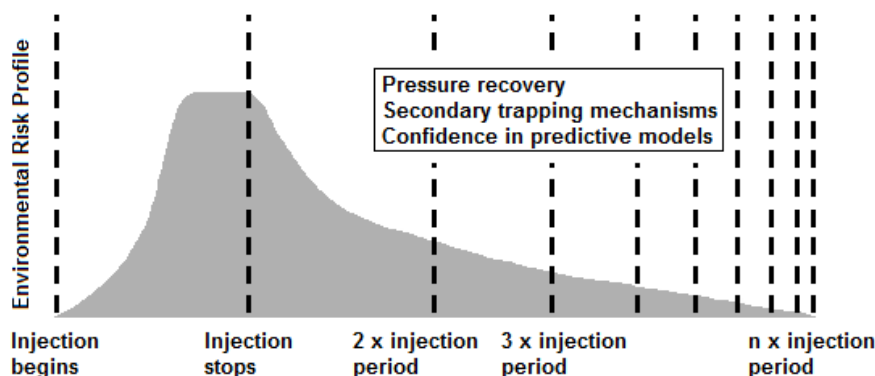
Song and Zhang (2013) discuss the viability of CO₂ storage and its long-term safety depends on the sealing capacity and integrity of the cap rock. Koornneef et al. (2012) present the well, the cap rock or seal, and geological faults and fractures as main paths to scenarios that may result in the leakage of CO₂ from the target reservoir, shown schematically in Figure 1: wells, cap rock or seal, and geological faults and fractures. In addition, Benson and Hepple (2005) propose some remediation techniques to prevent human or ecosystem impacts. It is noteworthy that, as in risk analysis, the presentation of these remediation options can help build public confidence in CGS Technology.

The risk profile varies over the pre-operation, operation, closure and post-closure phases of the CGS project, as shown in Figure 2. The risks for the CGS project start with the CO₂ injection, which begins during the operational phase and continues increasing until the injection starts to reduce or to cease that occurs when the curve flattens. This curve finally tends to decline over time in the closure and post-closure phases, periods corresponding to twice or more the injection period. One of the reasons for the risk increase during operational phase is due to the increase in build-up pressure in the storage reservoir. This pressure starts reducing when the CO₂ injection stops because the storage reservoir pressure decreases and trapping measures begin to act over time (Benson, 2008). Kempka et al. (2013) evaluated the contribution of the four CO₂ trapping mechanisms (structural, residual, solubility and mineral trapping) to long-term storage at the Ketzin pilot site in Germany. In the risk assessment of Weyburn-Midale, Choi et al. (2013) identified the wellbore integrity as being a significant risk factor for the permanence of long-term CO₂ storage, which is associated with corrosion.

Figure 1 Schematic CO₂ geological storage site and potential leakage pathways



Source: Benson and Hepple (2005)

Figure 2 Schematic of potential risks during the phases of a hypothetical CGS project

Source: After Benson (2008)

The most critical phase is the operational phase as underground injection of CO₂ into porous rock can exceed the allowable formation pressure and consequently can induce fracturing of the cap rock and creating or reactivating geological fractures or faults. This fault activation and induced fracturing by overpressure can create or enhance fracture permeability, thus providing pathways for unwanted CO₂. Moreover, during the operational phase problems can occur due to operational errors.

According to Tucker et al. (2013), late in the injection phase, well injection pressures at the sand face could exceed hydrostatic pressure and a combination of temperature and pressure may induce local fractures. The risk assessment shows that there is a possibility of fault reactivation. In addition, potential pathways for migration up to surface could occur along the casing in the case of a failure of the cement bond. For this reason, they emphasise the importance of monitoring tools and techniques with time depending on specific risks. Engebø et al. (2013) discuss the challenges related to risk assessment at each stage in the CCS project.

Although the failure zone of the CO₂ storage system suggests low risk, uncertainty regarding the assessment of the risk, if not properly addressed, can present a bottleneck and one of the greatest challenges for wide scale implementation of CCS (Roberts et al., 2011; Koornneef et al., 2012). In general, there is no historic data available for failure scenarios of CO₂ storage and the expert judgement used instead is based on experience in the oil and gas industry, from natural analogue studies and through modelling. Thus, the assessment of failure rates for most of the possible leakage scenarios lacks an empirical base and is heavily dependent on expert judgement. Additionally, there is no methodological standard on whether and how these scenarios should be modelled to estimate the risk using quantitative indicators (Koornneef et al., 2012).

Thus, based on observations of natural and industrial analogues, geological formations can be used to store this gas as long as the site is carefully selected and monitored. The generally adopted probability of leakage and failure through rock and faults is less than that of wellbores. For this reason, wellbores have been an important factor associated with the risk of CO₂ leakage from the target formation. Among the main concerns are: leaks through completion of poor quality and old injection wells, leaking through abandoned wells and inadequate characterisation of the rock seal as well as

inconsistent and inappropriate monitoring of injection wells, corrosion coatings (Benson, 2005; CSLF, 2009).

3 Qualitative risk assessment of CGS projects

3.1 Main methods available in literature

Based on Condor et al. (2011) and NETL (2013), the main qualitative methods for risk assessment of CGS Projects are summarised in Table 1: vulnerability evaluation framework (VEF), structured what-if technique (SWIFT), organised and systemic method of risk analysis (MOSAR), features, events and processes analysis (FEP analysis), carbon storage scenario identification framework (CASSIF), screening and ranking framework (SRF), and multi-criteria assessment (MCA).

Table 1 Qualitative risk methods for CGS projects

<i>Method</i>	<i>Objective</i>	<i>Application</i>	<i>References</i>
VEF	Evaluation of the system's vulnerability to adverse impacts on the CGS	Strategy for site assessment and guide to regulatory agencies	EPA ² (2008)
SWIFT	Hazard identification	Mapping of the dangers and consequences	Sollie et al. (2011) and DNV (2010)
MOSAR	Identification of the risks and barriers to contain them	Systematic analysis of risk for well-known sites	Cherkaoui and Lopez (2009)
FEP	Elaboration of scenarios	Screening and site selection	Savage and Maul (2004), Quintessa (2010), Wildenborg et al. (2005), and NETL (2013)
CASSIF	Analysis of scenarios based on the analysis of well, and seal failures	Screening and site selection	Yavuz et al. (2009)
SRF	Analysis of geological barriers and potential leakage near the surface	Risk assessment of storage sites	Oldenburg (2005)
MCA	Evaluation of alternatives	Strategy for screening and selecting the storage location	Gough and Shackley (2006)

Source: After Condor et al. (2011)

For a comparative analysis of the risk assessment methods and the aspects influencing the estimated risk each method was evaluated according to how it complied with the following aspects: cause or initiating event, frequency, severity, uncertainty and safeguard. These aspects were selected because of their influence on the estimated risk and the importance of evaluating risk in CO₂ storage.

Each aspect was qualitatively weighted by a team of experts on 4 levels and the methods were classified by numbers from 0 to 3. A method that received a number 3 classification or considers the aspect analysed through a structured way 100%, while a method that receives a number 2 classification or considers 66% of the aspect analysed and the methods classified as 1 and 0 consider respectively 33% and 0%. More detailed information about the weight scales of each method can be found in Paraguassu (2012). The result of this evaluation is presented in Table 2.

Table 2 Methods evaluated according to compliance with uncertainty, initiator event, safeguard and consequence aspects

<i>Aspects analysed</i>	<i>Methods of risk analysis</i>						
	<i>VEF</i>	<i>SWIFT</i>	<i>MOSAR</i>	<i>FEP</i>	<i>CASSIF</i>	<i>SRF</i>	<i>MCA</i>
Uncertainty	1	3	0	2	2	3	1
Initiator event	3	3	3	3	3	3	1
Safeguard	3	3	3	0	0	1	1
Frequency	0	1	3	3	0	1	1
Consequence	3	3	3	3	3	3	1

<i>Scale hue</i>							
Does not satisfy (0%)	1	Satisfies a little (33%)	1	Partially satisfies (66%)	2	Satisfies the aspect mentioned (100%)	3

SWIFT is a method for hazard identification based on checklists made from the Quintessa online database. It is used to guide the discussion of topics such as reservoir, seal, overburden, vadose zone, surface, wells, fault zones and atmosphere. The points discussed for each identified hazard are: causes, uncertainty, consequences and safeguards (Sollie et al.; 2011; DNV, 2010). Among the methods for qualitative risk analysis, the SWIFT method was the most structured.

In contrast to the SWIFT method, MCA was the least complete because the items to be analysed by this method depend on the choice of the team executing and the stakeholders because the MCA method allows stakeholders the flexibility to explore options with their own criteria, weightings and scores. Thus, the aspects ‘initiating event’, ‘safeguard’, ‘uncertainty’ and ‘frequency’ were not presented clearly.

The MOSAR method was structured for understanding the risk scenarios. However, uncertainty, a critical factor for CGS project risk, was not considered. Unlike MOSAR, both the SWIFT and SRF methods considered uncertainty in the analysis. Using SWIFT it is possible to map the uncertainty associated with both frequency and consequence information while in SRF it is possible to map the uncertainty regarding information on HSE risk.

For the CASSIF and FEP methods the uncertainty is dealt with implicitly. In CASSIF, its first step consists of answering a questionnaire in which the user can indicate the level of uncertainty of the quality of site data that will be base for characterising the storage site. While in the FEP Method, uncertainty is associated with the future occurrence of a determined scenario, which is classified as variant scenario.

Despite the importance of measures to prevent, control or mitigate the potential effect of CO₂ leakage, the aspect ‘safeguard’ is not addressed in the most methods. Both the SWIFT and MOSAR methods enable a more structured mapping and VEF indicates

which items can be evaluated to monitor and mitigate risks. In addition to the ‘safeguard’ aspect, ‘frequency’ and ‘uncertainty’ were aspects poorly treated by the methods due to the lack of specific knowledge based on research and field data that could offer better basis for estimation. Koornneef et al. (2012) discuss these problems. Thus, to deal with all the aspects involved the RA-CO₂ Method is proposed as it is flexible, transparent, robust, comprehensive, systematic, low cost and easy to use for qualitative estimation of risk.

3.2 *Background to the RA-CO₂ method*

The criteria and approach used for the development of RA-CO₂ method were defined from the set of characteristics of the qualitative methods of VEF, SWIFT, MOSAR, FEP, CASSIF, and MCA method with the insertion of concepts based on reports and from the sector’s leading companies and risk management standards, presented in Table 3.

The structure adopted for the RA-CO₂ method, a worksheet with columns, was based on the structure presented by SWIFT and by both hazard and operability study (HAZOP) and preliminary hazard analysis (PHA) methods, which are presented in Bahia (Estado) (2009). The part labelled ‘compartment’ was based on the term adopted in CASSIF wherein the scenario analysis is performed from the evaluation of three main scenarios leakage of CO₂: well, fault and seal. Polson et al. (2012) also emphasise them as potential leakage pathways.

The part labelled ‘aggravating’ which is presented in RA-CO₂ method refers to circumstances that can intensify the cause of a particular scenario of CO₂ leakage negatively. The ‘aggravating’ can be classified as dynamic actions and static conditions the main difference between them is their timescales which the static conditions happen on shorter timescales. This approach has been proposed in RA-CO₂ method based on FEP Approach to describe the long-term performance and safety of geological storage of CO₂.

The analysis of aggravating circumstances is important because the impacts from CO₂ leakage depend on the response of local organisms to elevated CO₂ concentrations, which can be long-term chronic and short-term acute exposure as discussed by Koornneef et al. (2012), who also emphasise the effect of long-term exposure on ecosystems as a knowledge gap. For healthy humans, some effects are presented in IPCC (2005).

The proposed criteria for the both frequency and severity categories were also based on Bowden et al. (2013a, 2013b) and on the industrial risk analysis guide (FEPAM, 2001), risk assessment tool and guidance (HSE 2008) and the standard risk management of Bahia [Bahia (Estado), 2009], and Australian Standards (2004) strongly cited by Fletcher (2005) and Underschultz et al. (2011). Despite the references FEPAM (2001), HSE (2008) and Bahia (Estado) (2009) are not specific to the risk of CO₂ storage, they are consolidated technical risk references. In order to be consistent with ISO 31000 (2009), the study was conducted following its guidelines.

The mapping of the uncertainty of frequency and severity in the RA-CO₂ method was adopted based on SWIFT, CASSIF, FEP and SRF methods. Although these methods handle uncertainty in different ways, the mapping of the uncertainty is an important point in the RA-CO₂ method because it is one of the greatest challenges for CCS projects as discussed by authors as Condor et al. (2011), Koornneef et al. (2012), Roberts et al. (2011), Polson et al. (2012).

Table 3 References for the development of the RA-CO₂ method

<i>Items of the proposed method</i>	<i>Brief definition</i>	<i>References</i>
Compartment	Main migration paths for leakage of CO ₂	Cherkaoui and Lopez (2009), Bahia (Estado) (2009), Wildenborg et al. (2005), and Yavuz et al. (2009)
Attenuating	Also called ‘Safeguards’ they are measures and actions that can reduce risk	Cherkaoui and Lopez (2009), Bahia (Estado) (2009), Wildenborg et al. (2005), Yavuz et al. (2009), DNV (2010), and Sollie et al. (2011)
Aggravating	Items that may intensify the event initiator or the effects of CO ₂ leakage	Wildenborg et al. (2005).
Frequency	Chance of CO ₂ leakage occurring	FEPAM (2001), Cherkaoui and Lopez (2009), Bahia (Estado) (2009), DNV (2010), and Sollie et al. (2011)
Severity	Consequence or impact categories due to CO ₂ leakage	Wildenborg et al. (2005), HSE (2008), Cherkaoui and Lopez (2009), Bahia (Estado) (2009), and Yavuz et al. (2009)
Cause or initiator event	Each event initiator can have one or more causes responsible for the occurrence of leakage	Wildenborg et al. (2005), EPA (2008), Cherkaoui and Lopez (2009), Bahia (Estado) (2009), DNV (2010), and Sollie et al. (2011)
Uncertainty	Level of mistrust or doubt about the information provided during the analysis	Oldenburg (2008), Yavuz et al. (2009), DNV (2010), and Sollie et al. (2011)

Paté-Cornell (1996), for example, presents different levels of uncertainty treatment in risk analysis mainly from a quantitative viewpoint. However, for the purposes of the RA-CO₂ method uncertainty is qualitatively weighted on a scale of 0 to 100% to assess the quality of information given and to qualify the scenario uncertainty by the team that leads to risk analysis from the RA-CO₂ method. This weighted scale is proposed based on Oldenburg (2005), Sollie et al. (2011), Polson et al. (2012), Bowden et al. (2013a, 2013b).

The risks are grouped into categories according to severity to people, environment, image, facilities (geological storage) and financial aspects. These categories were adopted based on Australian Standards (2004), HSE (2008), Bahia (Estado) (2009) and DNV (2009, 2010, 2011) and the criteria for frequency category based on FEPAM (2001) and Bahia (Estado) (2009).

4 RA-CO₂ method: a new approach to assess CGS risks

The RA-CO₂ method is a qualitative method for risk assessment of CGS technology. The RA-CO₂ method has been developed to analyse the ways in which CO₂ can be released in an undesirable or uncontrolled fashion and consequently lead to potential impacts such as

damage to the company reputation or project image, environment, personal security, integrity of the storage system and financial damage. The risks are qualitatively evaluated and classified as high, medium or low risk.

4.1 RA-CO₂ method implementation

4.1.1 Teamwork approach

The RA-CO₂ method is an inductive method structured to identify the potential causes that can lead to the danger of CO₂ leakage from the storage site and the results of this method depend on available information and on team experience. Thus, a multidisciplinary team should perform the analysis. The presence of at least three types of professionals in the team is essential to support the analysis: a leader, a supporter (scribe, data recorder, organiser, etc.), and an expert. The leader is the person who knows the method and is responsible for carrying out the risk analysis, the scribe records the information and the expert has information and knowledge of similar systems (Sutton, 1997; Nolan, 1994).

4.1.2 Database and information for identifying risks

Good quality information is important in identifying risks and the starting point for risk identification may be historical records, incident databases and analysis of failures and previous risk registers if they exist. There are also focus group discussions, surveys and questionnaires, structured interviews, expert judgement and personal experience or past organisational experience, results and reports from audits, inspections and site visits, checklists (Australian Standards, 2004). A database that has often been used is FEP Database developed by Quintessa (2010) which contains FEPs that describe the current and future states of the storage system.

Some typical data used to characterise and select geological CO₂ storage sites are presented by IPCC (2005): seismic profiles across the area of interest, structure contour maps of reservoirs and seals, maps of the structural boundaries of the trap, documentation and maps of faults and fault, oil and gas production data, geomorphological data and tectonic investigations.

4.1.3 RA-CO₂ method review steps

Once the boundary conditions are determined, defining the objectives and scope of the analysis as well as the participants of the working team and survey data required for analysis, the next step is defining the boundaries of the process analysis from a subdivision into compartments. Then, from the system data and team experience, the worksheet presented in Table 4 is completed. The conceptual model of the RA-CO₂ Method can be seen in Figure 3 showing the implementation steps.

For each cause or initiator event identified the potential impacts, attenuating (safeguards) and aggravating factors are mapped, the frequency of occurrence and severity are associated: the basis for risk scenario formation. The simplified sequence of steps used to conduct the review is as follows:

- define the objectives and scope of the analysis
- define the teamwork and boundary conditions

- perform data collection
- explain the RA-method and the design intentions (workshop/meeting)
- identify the scenario causes (initiator events) and consequences
- identify all attenuating and aggravating factors that influence the evolution states of CO₂ storage
- specify the attenuating factors (safeguards)
- determine the frequency of occurrence and severity of each scenario
- ponder the uncertainty associated to frequency of occurrence and severity of each scenario
- for the risks classified as unacceptable, make recommendations to reduce it, ranking all recommendations according to schedule of implementation
- write the final report.

Figure 3 Conceptual model of the RA-CO₂ method

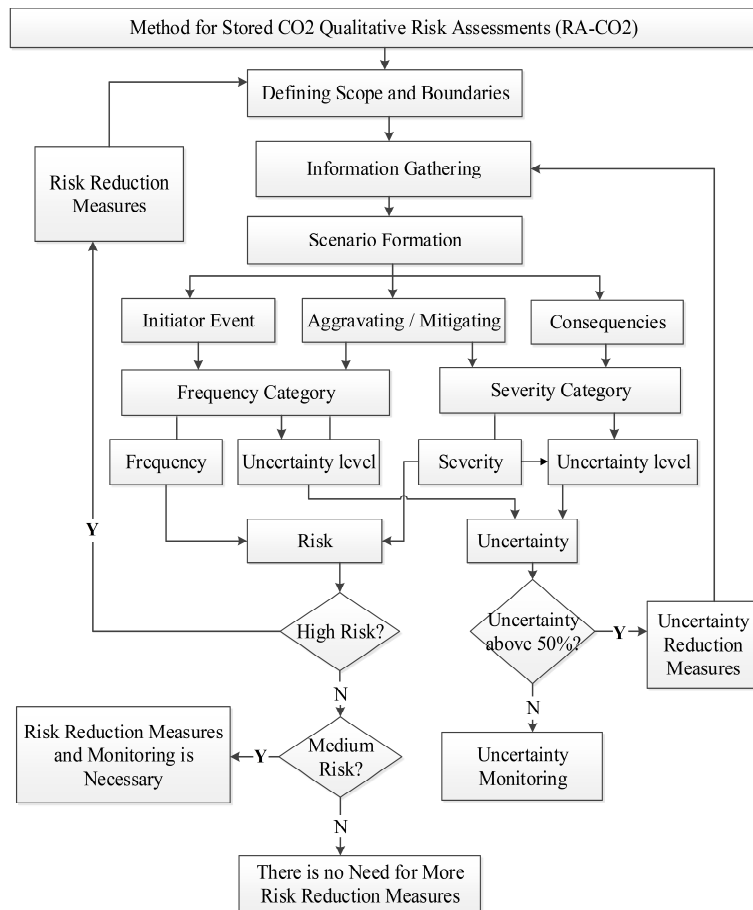


Table 4 Worksheet example for the method for stored CO₂ qualitative risk assessments (RA-CO₂)

<i>Method for stored CO₂ qualitative risk assessments (RA-CO₂)</i>			
<i>Compartment: Team:</i>		<i>System/area: Date:</i>	
<i>Page:</i>			
<i>Aggravating</i>	<i>Frequency category</i>	<i>Severity category</i>	<i>Risk category</i>
<i>Initiator event</i>	<i>Frequency</i>	<i>Severity</i>	<i>Risk</i>
<i>Dynamic actions</i>	<i>Uncertainty</i>	<i>Uncertainty</i>	<i>Uncertainty</i>
<i>Static conditions</i>			<i>Actions and observations</i>
<i>Attenuating (safeguards)</i>			<i>Number of scenario</i>
<i>Consequences</i>			
Responsible for the occurrence of CO ₂ leakage with potential to cause damage (dynamic).	The frequency categories can be classified as improbable (IM), remote (RE), occasional (OC), probable (PR), and frequent (FR).	The severity categories can be classified as low (LO), moderate (MO), critical (CR), and catastrophic (CA).	The severity categories can be classified as low, medium, and high.
Actions that take place over time negatively contributing to the occurrence of danger of cumulative and dynamic way.	Uncertainty level associated with the frequency information expressed ranging from 0 to 100%.	Uncertainty level associated with the severity information can be expressed ranging from 0 to 100%.	Uncertainty level associated with the risk information expressed ranging from 0 to 100%.
Conditions inherent to the process, operation or to the environment. These conditions take place over time contributing negatively to the occurrence of danger in short timescale (acute).			Relevant Information associated with each risk scenario identified.
Measures that mitigate the occurrence frequency and impact of the CO ₂ leakage.			Serial number referencing each risk scenario.
Effects caused due to CO ₂ leak.			

4.2 Structure of RA-CO₂ method

The RA-CO₂ method worksheet is basically structured in nine main columns for initiator events, aggravating circumstances, mitigating measures, consequences from CO₂ leakage, frequency and severity categories, suggestions or recommendations and one number column to reference each accident scenario as shown in Table 4 and described as follows:

(1st column) initiator event: In this column all initiating events or causes which may lead to the unwanted migration of CO₂ impacting the company reputation, project image,

environment, people's safety and causing financial damage are listed. The causes or initiator events of CO₂ leakage may involve both human errors and natural occurrences.

(2nd column) aggravating: in this column, the actions and conditions that may contribute negatively to increase the occurrence of initiating events or leveraging the events identified are listed. The aggravating circumstances can be due to static conditions or dynamic actions.

Static conditions are conditions inherent to the process, operation or environment. The result for the event initiator is immediate (acute) and for this reason its timescale is smaller compared to the dynamic action timescale. Dynamic actions are actions that happen over time and the outcomes of the initiator event are cumulative and dynamic because the effect from the action is not immediate. Therefore, dynamic actions are chronic actions.

(3rd column) attenuating (safeguards): in this column, the preventive or corrective measures to avoid CO₂ leakage scenarios developing into incidents and mitigate its effects are described. Also called 'safeguard', the preventing and mitigating measures are actions that may reduce the both occurrence frequency and severity of the analysed risk scenarios and depending on the case may also reduce uncertainty associated with the frequency and consequence.

(4th column) consequences: in this column the consequences of the effect expected as result of the identified initiator event are described. These consequences are related to the impact and effects that can lead to financial losses, put at risk people's safety, the company reputation or project image, environment and storage system facilities.

(5th column) frequency: in this column the frequency category of scenarios and their level of uncertainty are shown. The degree of uncertainty associated with the frequency information is expressed as a percentage ranging from 0 to 100% depending on the consensus of the executing team. The frequency categories can be classified as improbable (IM), remote (RE), occasional (OC), probable (PR), and frequent (FR) as presented in Table 5.

Table 5 Example of frequency categories for RA-CO₂ method

<i>Sigla</i>	<i>Name</i>	<i>Description</i>
IM	Improbable	Conceptually possible, but extremely unlikely to occur during the lifetime of the project.
RE	Remote	Not expected to occur during the lifetime of the project. It requires multiple failures.
OC	Occasional	Unlikely to occur. Requires double failure or simply delayed.
PR	Probable	Expected to occur during the lifetime of the project/installation. It requires a single fault.
FR	Frequent	Expected to occur several times during the life of the project.

Source: Developed from FEPAM (2001) and Bahia (Estado) (2009)

(6th column) severity: in this column the severity category of the scenario and its level of uncertainty associated to frequency information are shown. The degree of uncertainty associated with the frequency information is expressed as a percentage ranging from 0 to 100% depending on the consensus of the executing team. The severity categories can be classified as low (LO), moderate (MO), critical (CR), and catastrophic (CA) as presented in Table 6.

Table 6 Example of the severity categories for RA-CO₂ method

		<i>Description</i>			
<i>LO</i> <i>Low</i>	<i>MO</i> <i>Moderate</i>	<i>CR</i> <i>Critical</i>	<i>CA</i> <i>Catastrophic</i>		
<i>Impact</i>	Slight effect	Minor effect	Local effect	Massive effect	
	<ul style="list-style-type: none"> • No damage or with minimal damage to the environment • Environmental impact of small magnitude with reversible internal or external range from immediate actions 	<ul style="list-style-type: none"> • Damage due to situations or values considered tolerable between minimum and average levels 	<ul style="list-style-type: none"> • Large occurrence environmental causing damage in a wide area • Damage due to situations or values considered tolerable between average and maximum levels 	<ul style="list-style-type: none"> • Large occurrence causing environmental damage in a wide area • Damage due to situations or values considered above the tolerable maximum levels 	
	Slight injury	Injury	Fatality	Multiple fatalities*	
People	<ul style="list-style-type: none"> • Accident without interrupting work • Discomfort due to the event in the local area 	<ul style="list-style-type: none"> • Accident with interruption • Evasion of staff 	<ul style="list-style-type: none"> • Victims with permanent disabling injuries or fatality • Evasion of external community 	<ul style="list-style-type: none"> • Causes death or serious injury to one person or more people 	
Image	Slight impact	Limited impact	Regional impact	National or international impact	
	<ul style="list-style-type: none"> • No media coverage or insignificant coverage in local media • No public concerns 	<ul style="list-style-type: none"> • Possible external questions with media coverage of the incident by neighbouring community due to public concern 	<ul style="list-style-type: none"> • Complaints and regional media coverage of the incident in the neighbouring community reflecting in regional media • Significant effect on public perception of the project 	<ul style="list-style-type: none"> • Adverse publicity in national or international media • Protests and demonstrations reverberating in national and international media 	

Note: *Multiple = depends on the project, company, context.
 Source: Developed from HSE (2008), Hnottavange-Telleen et al. (2009), Polson et al. (2012), Bahia (Estado) (2009) and DNV (2009, 2010, 2011)

Table 6 Example of the severity categories for RA-CO₂ method (continued)

		<i>Description</i>			
<i>LO</i> <i>Low</i>	<i>MO</i> <i>Moderate</i>	<i>CR</i> <i>Critical</i>	<i>CA</i> <i>Catastrophic</i>		
<i>Impact</i>					
Zero or slight damage		Severe damage			
<ul style="list-style-type: none"> No migration or migration of CO₂ inside the defined storage system No damage or insignificant damage 		<ul style="list-style-type: none"> Unexpected migration of CO₂ outside the defined storage system Impact of considerable magnitude, but reversible from mitigating actions restricted to defined storage system 			
<i>Facilities</i>		<ul style="list-style-type: none"> Leakage to vadose zone over small area (< 100 m²) Impact of considerable magnitude, but reversible with mitigating actions that extend beyond the limit of the defined storage system 			
<ul style="list-style-type: none"> Accident restricted to the site of origin of the problem 		<ul style="list-style-type: none"> Leakage to vadose zone over large area (> 100 m²) Irreversible impact or difficult impact to reverse even from mitigating actions or large magnitude and large extension impact 			
<i>Financial</i>		<ul style="list-style-type: none"> Significant loss with reversible impairment of the investment in the project Significant loss with partially reversible impairment of investment in the project Irreversible impairment of investment in the project 			

Note: *Multiple = depends on the project, company, context.

Source: Developed from HSE (2008), Hnottavange-Telleen et al. (2009), Polson et al. (2012), Bahia (Estado) (2009) and DNV (2009, 2010, 2011)

(7th column) risk: the classification of risks scenarios are shown in this column. The risks of scenarios are obtained by combining the frequency and severity categories from risk.

Matrix (Figure 4) and depending on the region, the risk can be classified as low, medium or high.

Figure 4 Example of risk classification matrix for the RA-CO₂ method

Risk Matrix			Frequency Category				
			IM	RE	OC	PR	FR
			Improbable	Remote	Occasional	Probable	Frequent
Severity Category	CA	Catastrophic	Medium	Medium	High	High	High
	CR	Critical	Low	Medium	Medium	High	High
	MO	Moderate	Low	Low	Low	Medium	High
	LO	Low	Low	Low	Low	Low	Medium

The risk obtained for each of the scenarios is associated with a qualitative uncertainty level, and this level is obtained from the values stipulated by the team for the both frequency and consequence information. For the scenarios that present uncertainty greater than 50%, the team should propose measures to reduce the uncertainty.

According to CCPS-AICHE (2008), the risk acceptability criteria using Risk Matrix are the best metrics to determine if additional risk controls will be needed as well as the means to compare the benefits of competing risk mitigation options. In essence, Eduljee (2000) argues that the acceptability and development of risk management strategies is more likely to be based on the principles of as low as reasonably achievable (ALARA) or as low as reasonably practicable (ALARP) than on absolute expressions of risk or tolerability. To analyse these kinds of scenarios the team should evaluate based on a cost benefit decision. According to Nolan (1994), in cases where the cost for any proposed recommendation is near or exceeds the potential remediation costs after the potential incident, the risk may be termed as low as reasonably practical (ALARP). Based on Bahia (Estado) (2009), the risk criteria adopted this paper are the following:

High risk: this category indicates a condition of unacceptable risk, where it is necessary to propose measures to reduce risk that should be implemented on a mandatory and immediate basis as well as do a quantitative risk analysis.

Medium risk: this category indicates a condition of intermediate risk in which it is necessary to propose recommendations and corrective actions. The recommendations and corrective actions need to be presented as well as their respective deadlines for implementation. The implementation of the measures should take place if they are considered economically and technically feasible. The risk scenarios classified as medium risk should be subject to further analysis to reduce the risk and uncertainty analysis. After this, having exhausted the possibilities of improvements, they may be considered as acceptable though be still classified as medium risk. Thus, the most appropriate safeguard depends on a balance among cost, effort, and the benefits with implementing the improvements and the decision should take into consideration if the treatment of risk is economically justifiable.

Low risk: this category indicates a condition of acceptable risk, in which recommendations can be considered as suggestions for reduced frequency or severity, and complementary studies are not necessary. Although the suggestions, comments and improvement actions can be proposed, implementation is not mandatory.

(8th column) actions and observations: in this column the observations, suggestions and actions needed for each accident scenario are listed.

(9th column) this column gives a serial number referencing each accident scenario to facilitate its identification.

5 Conclusions

Several alternatives have been studied to evaluate and understand the potential risks associated with CO₂ geological storage. In spite of this, there are gaps in the methods evaluated. The main gaps identified for GS projects are related to uncertainty and frequency. These gaps have been caused mainly by lack of knowledge and lack of specific data about storage systems.

Among the seven methods for qualitative risk analysis, the SWIFT method was the most complete because the points discussed for each hazard identified causes, uncertainty, consequences and safeguards. From this comparative study, it was concluded that there is space to develop a user-friendly method applicable to complex and dynamic systems and that includes aspects, which influence risk estimation such as: uncertainty, safeguards, initiating event or causes, frequency and severity. Accordingly, the RA-CO₂ method includes these characteristics.

With the implementation of the RA-CO₂ method to assess the risk associated to storage, it is possible to obtain information about the causes that lead to the unwanted migration of CO₂ and the aggravating conditions that lead to this migration and preventive actions to avoid potential negative impacts as well their mitigating conditions. Thus, with the RA-CO₂ method it is possible better understand the potential risks associated with the CO₂ geological storage.

The economic cost comparison among the application of the RA-CO₂ method and the other methods was not part of the scope of this paper since the identification of the main parameters that influence the application cost was not the subject of this work analysis. Some of the parameters are human resources availability, staff expertise, speed of data collection and maintenance cost of the organisational assets. Thus, according to demand, resources availability, assumptions, constraints, and technical requirements of the project, the use of methods can have complementary action or be more appropriate in a specific phase of CGS project.

The methods studied are all qualitative and they tend to have similar costs, which depend on the scale and complexity of the project. Thus, the focus of this work was not the identification of the application cost of the method, but the identification and implementation of actions that could improve the process. The use of RA-CO₂ method has the advantage of early recognition of the hazards involved in the process resulting in a cost saving method. Noteworthy that the mapping of uncertainty enables focus on future investment on the recommendations made for the scenarios with lower uncertainty.

In future studies the validation of the proposed RA-CO₂ method is planned using a real case study to evaluate how flexible, practical and systematic it can be. The RA-CO₂ method can be applied to estimate the typical field risk for storage in a system that

simulates the actual conditions for geological storage of carbon. For better comparison of costs among all the qualitative methods studied, it is recommended, for future work, the application of all the methods in the same project to assess the actual cost according to CGS project phases.

Acknowledgements

We are grateful to Centre of Excellence in Research in Carbon Storage (CEPAC) Teamwork and UNIFACS Laureate International Universities for permission to carry out part of the research in their facilities, and the collaboration of the Osvaldo Andrade Souza (DNV Consultant). The authors would like to thank FAPESB for supporting this research.

References

- Australian Standards (2004) *Risk Management Guidelines: Companion to AS/NZS4360: 2004*, p.131, Standards Australia, Homebush, NSW.
- Bachu, S. (2000) 'Sequestration of CO₂ in geological media: criteria and approach for site selection in response to climate change', *Energy Conversion & Management*, Vol. 41, No. 9, pp.953–970.
- Bahia (Estado) (2009) *Resolução Conselho Estadual do Meio Ambiente (CEPRAM)*, No. 3.965, art 1º, de 30 de Junho de 2009, Aprova a Norma Técnica NT-01/2009 e seus Anexos, que dispõe sobre o Gerenciamento de Risco no Estado da Bahia. Diário Oficial do Estado, Bahia, 11 ago, 2009m No. 20.053.
- Benson, S. (2005) 'Risk assessment preface', in Benson, S. (Ed.): *Carbon Dioxide Capture for Storage in Deep Geologic Formations – Results from the CO₂ Capture Project: Geologic Storage of Carbon Dioxide with Monitoring and Verification*, Vol. 2, Elsevier, London.
- Benson, S. (2008) 'Multi-phase flow and trapping of CO₂ in Saline Aquifers', Published in the *Proceedings of 2008 Offshore Technology Conference*, Houston, TX, USA, 5–8 May 2008, Paper No. OTC 19244.
- Benson, S. and Hepple, R. (2005) 'Prospects for early detection and options for remediation of leakage from CO₂ storage projects', in Benson, S. (Ed.): *Carbon Dioxide Capture for Storage in Deep Geologic Formations – Results from the CO₂ Capture Project: Geologic Storage of Carbon Dioxide with Monitoring and Verification*, Vol. 2, No. 28, pp.1189–1203, Elsevier, London.
- Bowden, A., Pershke, D. and Chalaturnyk, R. (2013a) 'Geosphere risk assessment conducted for the IEAGHG Weyburn-Midale CO₂ monitoring and storage project', *International Journal of Greenhouse Gas Control*, Vol. 16S, Supplement 1, pp.S276–S290.
- Bowden, A., Pershke, D. and Chalaturnyk, R. (2013b) 'Biosphere risk assessment for CO₂ storage projects', *International Journal of Greenhouse Gas Control*, Vol. 16S, Supplement 1, pp.S291–S308.
- Bradshaw, J. et al. (2007) 'CO₂ storage capacity estimation: issues and development of standards', *International Journal of Greenhouse Gas Control*, Vol. 1, No. 1, pp.62–68.
- Carbon Sequestration Leadership Forum (CSLF) (2009) *Phase I Final Report from CSLF Risk Assessment Task Force*, Report CSLF-T-2009-04 [online] http://www.cslforum.org/publications/documents/RATF_Phase1FinalReport.pdf (accessed 20 July 2013).
- Center for Chemical Process Safety-American Institute of Chemical Engineers (CCPS-AICHE) (2008) *Guidelines for Chemical Transportation Safety, Security, and Risk Management*, Wiley, New York.

- Cherkaoui, A. and Lopez, P. (2009) 'CO₂ storage risk assessment: feasibility study of the systemic method MOSAR', *Safety and Security Engineering III (WIT Transactions on the Built Environment)*, Vol. 108, pp.173–184.
- Choi, Y. et al. (2013) 'Wellbore integrity and corrosion of carbon steel in CO₂ geologic storage environments: a literature review', *International Journal of Greenhouse Gas Control*, Vol. 16S, Supplement 1, pp.S70–S77.
- Condor, J. et al. (2011) 'A comparative analysis of risk assessment methodologies for the geologic storage of carbon dioxide', *Energy Procedia*, Vol. 4, pp.4036–4043.
- Det Norske Veritas (DNV) (2009) *CO₂QUALSTORE: Guideline for Selection and Qualification of Sites and Projects for Geological Storage of CO₂*, Report No. 2009-1425, Norway [online] http://www.dnv.com/binaries/co2qualstore_guideline_tcm4-412142.pdf (accessed 20 May 2013).
- Det Norske Veritas (DNV) (2010) *CO₂QUALSTORE: Workbook with Examples of Applications*, Report No. 2010-0254, Norway [online] http://www.dnv.com/binaries/co2qualstore_workbook_tcm4-436659.pdf (accessed 13 May 2013).
- Det Norske Veritas (DNV) (2011) *CO₂WELLS: Guideline for the Risk Management of Existing Wells at CO₂ Geological Storage Sites*, Report No. 2011-0448, Norway [online] http://www.dnv.com/binaries/co2wells_guideline_tcm4-465269.pdf (accessed 13 May 2013).
- Eduljee, G. (2000) 'Trends in risk assessment and risk management', *The Science of the Total Environment*, Vol. 249, Nos. 1–3, pp.13–23.
- Einsiedel, E.E. et al. (2013) 'Assessing socio-technical mindsets: public deliberations on carbon capture and storage in the context of energy sources and climate change', *Energy Policy*, Vol. 53, pp.149–158.
- Engebø, A. et al. (2013) 'Risk assessment and management for CO₂ capture and transport facilities', *Energy Procedia*, Vol. 37, pp.2783–2793.
- Environmental Protection Agency (EPA) (2008) *Vulnerability Evaluation Framework for Geologic Sequestration of Carbon Dioxide*, EPA430-R-08-009, p.85.
- Fletcher, W. (2005) 'The application of qualitative risk assessment methodology to prioritise issues for fisheries management', *ICES Journal of Marine Science*, Vol. 62, No. 8, pp.1576–1587.
- Frailey, S. and Finley, R. (2009) 'Classification of CO₂ geologic storage: resource and capacity', *Energy Procedia*, Vol. 1, No. 1, pp.2623–2630.
- Fundação Estadual de Proteção Ambiental Henrique Luiz Roessler (FEPAM) (2001) *Manual de Análise de Riscos Industriais*, Projeto de Manual de Análise FEPAM nº 01/01, Rio Grande do Sul: FEPAM.
- Gerard, D. and Wilson, E. (2009) 'Environmental bonds and the challenge of long-term carbon sequestration', *Journal of Environmental Management*, Vol. 90, No. 2, pp.1097–1105.
- Gough, C. and Shackley, S. (2006) 'Towards a multi-criteria methodology for assessment of geological carbon storage options', *Climate Change*, Vols. 1–3 No. 74, pp.141–174, Manchester.
- Health Service Executive (HSE) (2008) *Risk Assessment Tool and Guidance: Including Guidance on Application*.
- Hnottavange-Telleen, K., Krapac, I. and Vivalda, C. (2009) 'Illinois Basin – Decatur project: initial risk-assessment results and framework for evaluating site performance', *Energy Procedia*, Vol. 1, No. 1, pp.2431–2438.
- Intergovernmental Panel on Climate Change (IPCC) (2005) *IPCC Special Report on Carbon Dioxide Capture and Storage*, Cambridge University Press, Cambridge.
- Intergovernmental Panel on Climate Change (IPCC) (2007) *Climate Change 2007: Synthesis Report*, Geneva, Switzerland.
- International Energy Agency Greenhouse Gas R&D Programme (IEAGHG) (2009) *Natural and Industrial Analogues for Geological Storage of Carbon Dioxide*.

- International Organization for Standardization (ISO) 31000 (2009) *ISO 31000:2009: Risk Management: Principles and Guidelines*, Switzerland.
- Johnsson, F. et al. (2010) 'Stakeholder attitudes on carbon capture and storage – an international comparison', *International Journal of Greenhouse Gas Control*, Vol. 4, No. 2, pp.410–418.
- Kaplan, S. and Garrick, B. (1981) 'On the quantitative definition of risk', *Society for Risk Analysis*, Vol. 1, No. 1, pp.11–27.
- Kempka, T. et al. (2013) 'Assessment of long-term CO₂ trapping mechanisms at the Ketzin pilot site (Germany) by coupled numerical modelling', *Energy Procedia*, Vol. 37, pp.5419–5426.
- Koornneef, J. et al. (2012) 'The environmental impact and risk assessment of CO₂ capture, transport and storage e an evaluation of the knowledge base', *Progress in Energy and Combustion Science*, Vol. 38, No. 1, pp.62–86.
- Leitch, M. (2010) 'ISO 31000:2009 – the new international standard on risk management', *Risk Analysis*, Vol. 30, No. 6, pp.887–892.
- Morgado, C. and Esteves, V. (2011) 'Technological challenges in risk management of carbon capture and geological storage (CCGS) projects', *Proceedings of the International Conference on Industrial Engineering and Operations Management*, 22–25 January, Kuala Lumpur, Malaysia.
- National Energy Technology Laboratory (NETL) (2013) *Best Practices for: Risk Analysis and Simulation for Geologic Storage of CO₂*, p.86, Report DOE/NETL-2013/1603.
- Nolan, D. (1994) *Application of HAZOP and What-if Safety Reviews to the Petroleum, Petrochemical and Chemical Industries*, 1st ed., Noyes Publications, New Jersey.
- Oldenburg, C. (2008) 'Screening and ranking framework (SRF) for geologic CO₂ storage site selection on the basis of HSE risk', *Environmental Geology*, Vol. 54, No. 8, pp.1687–1694.
- Pacala, S. and Socolow, R. (2004) 'Stabilization wedges: solving the climate problem for the next 50 years with current technologies', *Science*, Vol. 305, No. 5686, pp.968–972.
- Paltrinieri, N. et al. (2013) 'Identification of hazards and environmental impact assessment for an integrated approach to emerging risks of CO₂ capture installations', *Energy Procedia*, Vol. 37, pp.2811–2818.
- Paraguassu, M. (2012) *Method Proposed for Qualitative Risks Assessment for the Carbon Dioxide Geological Storage: A Case Study of the Fazenda Mamoeiro Field Situated in Reconcavo Basin*, Unpublished Master thesis (Master of Industrial Engineering), Federal University of Bahia, Salvador, Brazil.
- Paté-Cornell, M. (1996) 'Uncertainties in risk analysis: six levels of treatment', *Reliability Engineering and System Safety*, Vol. 54, Nos. 2–3, pp.95–111.
- Polson, D., Curtis, A. and Vivalda, C. (2012) 'The evolving perception of risk during reservoir evaluation projects for geological storage of CO₂', *International Journal of Greenhouse Gas Control*, Vol. 9, pp.10–23.
- Praetorius, B. and Schumacher, K. (2009) 'Greenhouse gas mitigation in a carbon constrained world: the role of carbon capture and storage', *Energy Policy*, Vol. 37, No. 12, pp.5081–5093.
- Purdy, G. (2010) 'ISO 31000:2009 – setting a new standard for risk management', *Risk Analysis*, Vol. 30, No. 6, pp.881–886.
- Quintessa (2010) *Generic CO₂ FEP Database, Version 1.1.0*, Quintessa Limited, Henley-on-Thames, UK [online] <http://www.quintessa.org/co2fepdb> (accessed 20 July 2013).
- Roberts, J., Wood, R. and Haszeldine, R. (2011) 'Assessing the health risks of natural CO₂ seeps in Italy', *PNAS*, Vol. 108, No. 40, pp.16545–16548.
- Savage, D. and Maul, P. (2004) *A Generic FEP Database for the Assessment of Long-Term Performance and Safety of the Geological STORAGE of CO₂, Version 1.0*, QRS-1060A-1, Quintessa.
- Sollie, O. et al. (2011) 'An early phase risk and uncertainty assessment method for CO₂ geological storage sites', *Energy Procedia*, Vol. 4, pp.4132–4139.

- Song, J. and Zhang, D. (2013) 'Comprehensive review of Caprock-Sealing mechanisms for geologic carbon sequestration', *Environmental Science & Technology*, Vol. 47, No. 1, pp.9–22.
- Sutton, I. (1997) *Process Safety Management*, 2nd ed., MP – Morris Publishing, Houston, USA.
- Szulczewski, M. et al. (2012) 'Lifetime of carbon capture and storage as a climate-change mitigation technology', *PNAS*, Vol. 109, No. 14, pp.5185–5189.
- Tucker, O. et al. (2013) 'Development of an offshore monitoring plan for a commercial CO₂ storage pilot', *Energy Procedia*, Vol. 37, pp.4317–4335.
- Underschultz, J. et al (2011) 'CO₂ storage in a depleted gas field: An overview of the CO₂CRC Otway Project and initial results', *International Journal of Greenhouse Gas Control*, Vol. 5, No. 4, pp.922–932.
- Viebahn, P. et al (2007) 'Comparison of carbon capture and storage with renewable energy technologies regarding structural, economic, and ecological aspects in Germany', *International Journal of Greenhouse Gas Control*, Vol. 1, No. 1, pp.121–133.
- Wildenborg, T. et al. (2005) 'Risk assessment methodology for CO₂ storage: the scenario approach', in Benson, S. (Ed.): *Carbon Dioxide Capture for Storage in Deep Geologic Formations – Results from the CO₂ Capture Project: Geologic Storage of Carbon Dioxide with Monitoring and Verification*, Vol. 2, pp.1293–1316, Elsevier, London.
- Wu, D. and Olson, D. (2009) 'Introduction to the special section on 'optimizing risk Management: methods and tools'', *Human and Ecological Risk Assessment: An International Journal*, Vol. 15, No. 2, pp.220–226.
- Wu, D. and Olson, D. (2010) 'Introduction to special section on 'risk and technology'', *Technology Forecasting and Social Change*, Vol. 77, No. 6, pp.837–839.
- Wu, D., Olson, D. and Birge, J. (2013) 'Risk management in cleaner production', *Journal of Cleaner Production*, Vol. 53, pp.1–6.
- Yavuz, F. et al. (2009) 'Second generation CO₂ FEP analysis: CASSIF – carbon storage scenario identification framework', *Energy Procedia*, Vol. 1, No. 1, pp.2479–2485.

Notes

- 1 Carbon Sequestration Leadership Forum.
- 2 Environmental Protection Agency.