

RESEARCH

Open Access

Modelling the geographical distribution of soil-transmitted helminth infections in Bolivia

Frédérique Chammartin^{1,2}, Ronaldo GC Scholte^{1,2}, John B Malone³, Mara E Bavia⁴, PRIXIA NIETO³, Jürg Utzinger^{1,2} and Penelope Vounatsou^{1,2*}

Abstract

Background: The prevalence of infection with the three common soil-transmitted helminths (i.e. *Ascaris lumbricoides*, *Trichuris trichiura*, and hookworm) in Bolivia is among the highest in Latin America. However, the spatial distribution and burden of soil-transmitted helminthiasis are poorly documented.

Methods: We analysed historical survey data using Bayesian geostatistical models to identify determinants of the distribution of soil-transmitted helminth infections, predict the geographical distribution of infection risk, and assess treatment needs and costs in the frame of preventive chemotherapy. Rigorous geostatistical variable selection identified the most important predictors of *A. lumbricoides*, *T. trichiura*, and hookworm transmission.

Results: Results show that precipitation during the wettest quarter above 400 mm favours the distribution of *A. lumbricoides*. Altitude has a negative effect on *T. trichiura*. Hookworm is sensitive to temperature during the coldest month. We estimate that 38.0%, 19.3%, and 11.4% of the Bolivian population is infected with *A. lumbricoides*, *T. trichiura*, and hookworm, respectively. Assuming independence of the three infections, 48.4% of the population is infected with any soil-transmitted helminth. Empirical-based estimates, according to treatment recommendations by the World Health Organization, suggest a total of 2.9 million annualised treatments for the control of soil-transmitted helminthiasis in Bolivia.

Conclusions: We provide estimates of soil-transmitted helminth infections in Bolivia based on high-resolution spatial prediction and an innovative variable selection approach. However, the scarcity of the data suggests that a national survey is required for more accurate mapping that will govern spatial targeting of soil-transmitted helminthiasis control.

Keywords: Bayesian modelling, Bolivia, Geostatistical variable selection, Mapping, Soil-transmitted helminths

Background

Soil-transmitted helminth infections are mainly caused by the intestinal worms *Ascaris lumbricoides*, *Trichuris trichiura*, and the two hookworm species *Ancylostoma duodenale* and *Necator americanus* [1]. They are the most prevalent neglected tropical diseases, and they are widely distributed across Latin America [2,3]. Soil-transmitted helminthiasis and other neglected tropical diseases primarily affect low-income populations, causing chronic conditions, learning disabilities, and reduced productivity and income earning capacity in later life.

Morbidity control and, where resources allow, local elimination are now recognised as a priority for achieving the millennium development goals [4]. In 2009, the Pan American Health Organization (PAHO) developed a plan to eliminate neglected and other poverty-related diseases in Latin America and Caribbean countries. Soil-transmitted helminthiasis were identified as target diseases to be controlled through preventive chemotherapy and by promoting access to clean water, improved sanitation, and better hygiene behaviour [5]. Control programmes require reliable baseline information of the geographical distribution of the number of infected people and disease burden estimates in order to enhance the spatial targeting and cost-effectiveness of planned interventions [6,7].

* Correspondence: penelope.vounatsou@unibas.ch

¹Department of Epidemiology and Public Health, Swiss Tropical and Public Health Institute, P.O. Box, CH-4002 Basel, Switzerland

²University of Basel, P.O. Box, CH-4003 Basel, Switzerland

Full list of author information is available at the end of the article

Bolivia is ranked last among the Western Hemisphere countries in terms of key health indicators. For example, child mortality rate is the worse in South America and, according to the 2001 census, 64% of the population did not have enough income to meet their basic needs [8]. The prevalence of soil-transmitted helminth infection is estimated at around 35% [9]. However, the geographical distribution and burden of soil-transmitted helminth infections is poorly documented.

In the past 20 years, progress in geographical information system (GIS) and remote sensing techniques, coupled with spatial modelling, enabled a better understanding of helminth ecology and mapping at high spatial resolution [6,7,10-13]. Ecological niche and biology-driven models have been used in assessing the distribution of helminth infections [14-16]. Bayesian geostatistical models offer a robust methodology for identifying determinants of the disease distribution and for predicting infection risk and burden at high spatial scales [17]. These models have been widely used in assessing the relationship between helminth infection with demographic, environmental, and socioeconomic predictors, at sub-national [11,18], national [19], or regional scales [13,20,21]. In the Americas, high resolution, geostatistical, model-based risk estimates have been obtained for the whole continent [22] as well as for Brazil [23]. A key issue in geostatistical modelling is the selection of the predictors. Most of the variable selection methods in geostatistical applications rely on standard methods, such as stepwise regression or bivariate associations that are appropriate for non-spatial data [10,11]. However, ignoring spatial correlation leads to incorrect estimates of the statistical significance of the predictors included in the model. Recently, Bayesian variable selection has been introduced in geostatistical disease mapping [21,24].

The purpose of this paper was to map the geographical distribution of *A. lumbricoides*, *T. trichiura*, and hookworm in Bolivia, and to estimate the risk, number of infected school-aged children, and the costs related to treatment interventions in the country. Survey data were extracted from published and unpublished sources. Bayesian geostatistical models were employed using rigorous variable selection procedures.

Methods

Disease data

Data on the prevalence of soil-transmitted helminth infection were extracted from the global neglected tropical diseases (GNTD) database (www.gntd.org) [13,16,21,22,25]. The GNTD database is an open-access platform consisting of geo-referenced survey data pertaining to schistosomiasis, soil-transmitted helminthiasis, and other neglected tropical diseases. Surveys are identified through systematic searches of electronic databases such as

PubMed and ISI Web of Knowledge with no restriction of publication date or language. Our search strategy, including data quality appraisal, is summarised in Table 1.

Environmental, socioeconomic, and population data

A total of 40 environmental and socioeconomic variables were considered in our analysis. Environmental variables included 19 interpolated climatic data from weather stations related to temperature and precipitation, vegetation proxies such as the enhanced vegetation index (EVI) and normalized difference vegetation index (NDVI), altitude, land cover, as well as information on soil acidity and soil moisture. Various unsatisfactory basic needs (UBN) poverty indicators related to adequate housing material, insufficient housing space, inadequate services of water and sewer systems and inadequate health attention were used as proxies of poverty. In addition, human development index (HDI) and infant mortality rate (IMR) were considered as alternative poverty measures. Impact of direct human influence on ecosystems was accounted by human influence index (HII). Population density and the proportion of school-aged children (age: 5–14 years), were used to estimate treatment needs and costs of intervention. Sources of the variables, together with their spatial and temporal resolution, are summarised in Table 2.

For prediction purposes, a 5×5 km spatial resolution grid was created. Environmental data available at 1×1 km spatial resolution, were averaged over their closest neighbours. Soil acidity, soil moisture, and infant mortality rate were linked to the prediction pixel with the closest distance. UBN and HDI were re-scaled by assigning to each grid pixel the value of the administrative unit they belong to. Re-scaling was performed in ArcMap version 10.0 (Environmental Systems Research Institute; Redlands, CA, USA).

Geostatistical model

Disease survey data are typically binomially distributed and modelled via a logistic regression. More precisely, let Y_i , n_i , and p_i be the number of infected individuals, the number of individuals screened, and the prevalence or risk of infection at location i , respectively, such as $Y_i \sim \text{Bin}(n_i, p_i)$. Spatial correlation is taken into account by introducing location-specific parameters φ_i that are considered as unobserved latent data from a stationary spatial Gaussian process. We modelled a temporal trend, the selected predictors (i.e. environmental and socioeconomic factors) X_i and φ_i on the *logit* scale: $\text{logit}(p_i) = X_i^T \beta + \varphi_i$. The temporal trend was modelled by a binary variable T_i indicating whether a survey was carried out before or from 1995 onwards. We assumed that $\varphi \sim \text{MVN} \left(\mathbf{0}, \Sigma \right)$ with variance-covariance matrix Σ . Geographical correlation was modelled by an isotropic exponential correlation function of distance,

i.e. $\Sigma_{cd} = \sigma_{sp}^2 \exp(-\rho d_{cd})$, where d_{cd} is the Euclidean distance between locations c and d , σ_{sp}^2 is the geographical variability known as the partial sill, and ρ is a smoothing parameter controlling the rate of correlation decay. The geographic dependency (range) was defined as the minimum distance at which spatial correlation between locations is less than 5% and is calculated by $3/\rho$. To facilitate model fit, the model was formulated using a Bayesian framework of inference. Vague normal prior distributions $\beta \sim N(0, \sigma^2 I)$ were adopted for the regression coefficients, an inverse gamma distribution $\sigma_{sp}^2 \sim IG(a_{\sigma_{sp}^2}, b_{\sigma_{sp}^2})$ was chosen for the variance σ_{sp}^2 , and a gamma distribution was assumed for the spatial decay $\rho, \rho \sim G(a_\rho, b_\rho)$.

Geostatistical variable selection

Bayesian stochastic search variable selection [26] was performed to select the most important predictors among the 40 socioeconomic and environmental predictors, while taking into account the spatial correlation in the data. Predictors were either standardised or categorised if they presented a non-linear bivariate association with the observed helminthiasis prevalence (on the *logit* scale). Furthermore, we considered a spike and slab prior distribution for the regression coefficients [27], which improves convergence properties of the Markov chain Monte Carlo (MCMC) simulation and allows selection of blocks of covariates such as categorical ones. In addition, we assessed correlation between the predictors and forced the model to choose only one (or none) predictor among those highly correlated (i.e. absolute value of Pearson's correlation coefficient larger than 0.9). The geostatistical variable selection explores all possible models and the final model is the one presenting the highest posterior probability.

The geostatistical variable selection specification is summarised in Figure 1. In particular, predictors were classified into 19 groups b , ($b = 1, \dots, 19$), depending on their mutual correlations. Thirteen predictors that were only moderately correlated with any other predictors were separated into single variable groups. Highly correlated predictors were divided into six groups, each containing 38 variables $X_{j_b}, j_b = 1, \dots, J_b$. The regression coefficients are defined as the product of an overall contribution α_{j_b} of the predictor X_{j_b} and the effect $\xi_{l_{j_b}}$ of each of its elements (i.e. categories), $X_{l_{j_b}}, l = 1, \dots, L$ categories (excluding baseline) of the predictor X_{j_b} . We assigned a spike and slab prior [27,28], which is a scaled normal mixture of inverse-gamma to α_{j_b} , that is $\alpha_{j_b} \sim N(0, \tau_{j_b}^2)$, where $\tau_{j_b}^2 \sim \gamma_{1b} \gamma_{2j_b} IG(a_\tau, b_\tau) + (1 - \gamma_{1b} \gamma_{2j_b}) v_0 IG(a_\tau, b_\tau)$. a_τ and b_τ are fixed parameters of non-

informative inverse-gamma distribution, while v_0 is a small constant shrinking α_{j_b} to zero when the predictor is excluded. The presence or absence of the predictors is defined by the product of two indicators γ_{1b} and $\gamma_{2b} = (\gamma_{2b1}, \dots, \gamma_{2bJ_b})^T$, where γ_{1b} determines the presence or absence of the group b in the model and $\gamma_{2b}, j_b = 1, \dots, J_b$ allows selection of a single predictor within the group. A Bernoulli and a multinomial prior distribution are assigned to γ_{1b} and γ_{2b} , respectively, such as $\gamma_{1b} \sim \text{Bern}(\Omega_1)$ and $\gamma_{2b} \sim \text{Multi}(1, \Omega_{2b1}, \dots, \Omega_{2bJ_b})$ with inclusion probabilities Ω_1 and Ω_{2b} . To allow greater flexibility in estimating model size, these probabilities are considered as hyper-parameters having non-informative beta and Dirichlet distributions. A mixture of two Gaussian distributions is assumed for $\xi_{l_{j_b}}, \xi_{l_{j_b}} \sim N(m_{l_{j_b}}, 1), m_{l_{j_b}} \sim 1/2\delta_1(m_{l_{j_b}}) + 1/2\delta_{-1}(m_{l_{j_b}})$, which shrinks $\xi_{l_{j_b}}$ towards $|1|$ (multiplicative identity). For predictors moderately correlated, γ_{2bJ_b} is fixed to 1, while the effect of linear predictors is only defined by an overall contribution of α .

To complete model specification, the spatial random effect $\underline{\phi}$ is modelled as defined in the previous subsection and a vague normal distribution is assigned to the constant term of the model. The subset of variables included in the models with the highest posterior probabilities identified the final models.

Implementation details

We considered the following values for the parameters of the prior distributions: $\sigma^2=100$, $(a_\rho, b_\rho) = (0.01, 0.01)$, $(a_{\sigma_{sp}^2}, b_{\sigma_{sp}^2}) = (2.01, 1.01)$, $(a_\tau, b_\tau) = (5, 25)$, $(a_{\Omega_1}, b_{\Omega_1}) = (1, 1)$, $(a_{\Omega_{2b}}) = (1, \dots, 1)$, and $v_0 = 0.00025$.

MCMC simulations were used to estimate model parameters. For variable selection, a burn-in of 50,000 iterations was performed and another 50,000 iterations were run to identify the model with the highest posterior probability. For each infection, the best geostatistical model was fitted with one chain sampler and a burn-in of 5,000 iterations. Convergence was assessed after an average of 50,000 iterations using the Raftery and Lewis [29] diagnostics. A posterior sample of 1,000 values was used for validation purposes and for prediction at unsampled locations. Prediction was carried out using Bayesian kriging [17] over a grid of 26,519 pixels of 5×5 km spatial resolution. The median and standard deviation of the predicted posterior distribution were plotted to produce smooth risk maps together with their uncertainty. Analyses were implemented in WinBUGS 14 (Imperial College and Medical Research Council; London, UK), while R version 2.7.2 (The R Foundation for

Table 1 Search strategy identification of for soil-transmitted helminth infection prevalence survey data in Bolivia

Keywords	Exclusion criteria	Quality control measures
Bolivi* AND helminth* (OR ascari*, OR trichur*, OR hookworm, OR necator, OR ankylostom*, OR ancylostom*, OR strongy*, OR hymenolepis*, OR toxocara*, OR enterobius*, OR geohelminth*, OR nematode)	Hospital-based study; case-control study (except control group); clinical trials (except baseline); drug-efficacy study (except placebo group); displaced population (travellers, military, expatriates, nomads); population treated for the infection during the past year; unclear location of the survey; sample size <10	Double check of each entry; search and elimination of duplicates; recalculation of prevalence; verification in Google Maps that point level coordinates correspond to human settlement

Statistical Computing) was used for predictions. Non-spatial explorative statistical analyses were performed in Stata version 10.0 (Stata Corporation; College Station, USA).

Model validation

Models were fitted on a random training sample of 39 locations for *A. lumbricoides* and *T. trichiura*, and 37 locations for hookworm. Model validation was performed on the remaining 10 test locations (around 20% of the total locations). The predictive performance was calculated by the proportion of test locations being correctly predicted within the k^{th} Bayesian credible interval (BCI) of the posterior predictive distribution (limited by the lower and upper quantiles $BCI_{i(k)}^l$ and $BCI_{i(k)}^u$, respectively), where k indicates the probability coverage of the interval as: $\frac{1}{10} \sum_{i=1}^{10} \min(I(BCI_{i(k)}^l < p_i), I(BCI_{i(k)}^u > p_i))$. The higher the number of test locations within the

narrowest and smallest coverage BCI, the better the model predictive ability.

Treatment needs and estimated costs

The number of infected school-aged children was calculated for each pixel from the geostatistical model-based estimated risk and the population density. According to guidelines put forward by the World Health Organization (WHO), all school-aged children should be treated twice a year in high-risk communities (prevalence of any soil-transmitted helminth infection $\geq 50\%$) and once every year in low-risk communities (prevalence of any soil-transmitted helminth infection between 20% and 50%). Large-scale preventive chemotherapy is not recommended in areas where prevalence is less than 20%; indeed treatment should be delivered on a case-by-case basis in such areas [30]. We estimated the number of albendazole or mebendazole treatments needed during one year in the school-aged population, considering different units at which levels of risk were determined

Table 2 Data sources and properties of the predictors explored to model soil-transmitted helminth infection risk in Bolivia

Data type	Source	Date	Temporal resolution	Spatial resolution
19 climatic variables related to temperature and precipitation	WorldClim ¹	1950-2000	-	1 km
Altitude	SRTM ²	2000	-	1 km
Land cover	MODIS/Terra ³	2000-2011	Yearly	1 km
EVI / NDVI	MODIS/Terra ³	2000-2011	16 days	1 km
Soil acidity / soil moisture	ISRIC-WISE ⁴	1960-2000	-	10 km
Unsatisfactory basic needs (UBN)	Census ⁵	2001	10 years	Municipality
Infant mortality rate (IMR)	CIESIN ⁶	2005	Yearly	5 km
Human influence index (HII)	LTW ⁷	2005	-	1 km
Human development index (HDI)	PAHO ⁸	2005	-	Municipality
Population density	WISE ⁴	2010	-	10 km
School-aged children proportion	IDB ⁹	2010	-	Country

¹ WorldClim Global Climate database v.1.4; available at: <http://www.worldclim.org/> (accessed: 1 March 2012).

² Shuttle Radar Topography Mission (SRTM); available at: <http://www.worldclim.org/> (accessed: 1 March 2012).

³ Moderate Resolution Imaging Spectroradiometer (MODIS); available at: <https://lpdaac.usgs.gov/> (accessed: 15 December 2012).

⁴ Global soil profile data ISRIC-WISE database v.1.2; available at: <http://www.isric.org/> (accessed: 15 December 2012).

⁵ Instituto nacional de estadística, 2001 census; available at: <http://www.ine.gov.bo/> (accessed: 1 March 2012).

⁶ 2005 Global subnational infant mortality rates, Center for International Earth Science Information Network (CIESIN). CIESIN, Palisades, NY, USA; available at: http://www.ciesin.columbia.edu/povmap/ds_global.html (accessed: 1 March 2012).

⁷ Last of the Wild Data Version 2, 2005 (LTW-2): Global Human Footprint Dataset (Geographic). Wildlife Conservation (WCS) and Center for International Earth Science Information Network (CIESIN); available at: <http://www.ciesin.org/wildareas/> (accessed: 1 March 2012).

⁸ Pan American Health Organization; personal communication.

⁹ International Data Base (IDB) United States Census Bureau; available at: <http://www.census.gov/population/international/> (accessed: 1 March 2012).

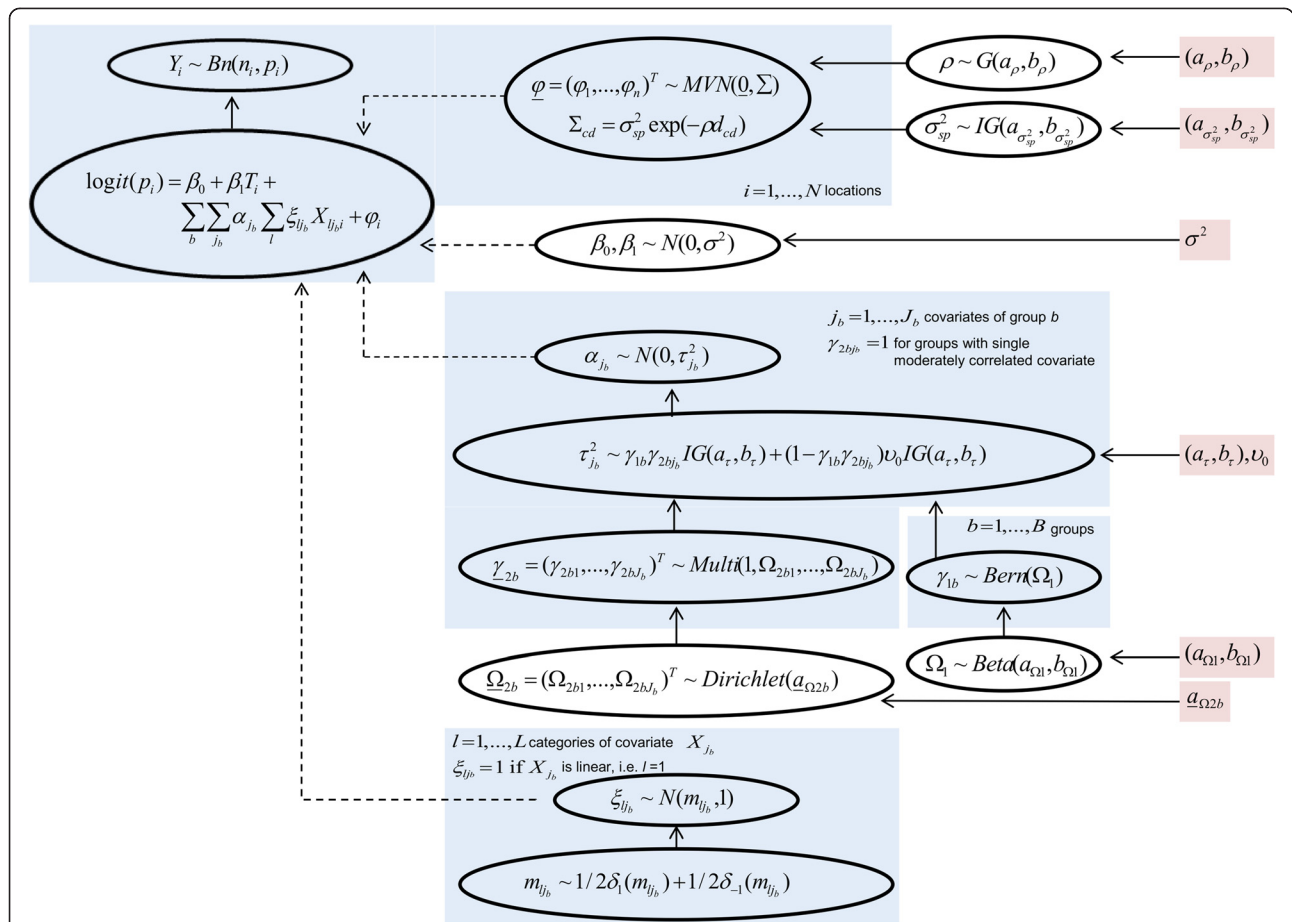


Figure 1 Acyclic graph of the geostatistical variable selection. Stochastic and logical nodes are represented as ellipses. Dashed arrows are logical links and straight line arrows are stochastic dependencies. Fixed parameters of the prior distributions are highlighted in pink.

(i.e. pixel, municipality, province, and department). Hence, we followed the same methodology as for estimating annualised praziquantel needs against schistosomiasis [31]. To calculate the cost of a school-based deworming programme in Bolivia, the estimated number of treatments was multiplied by an average unit cost equivalent to US\$ 0.25, which includes additional expenses for training, drug distribution, and administration [9,32].

Results

Seven out of 59 identified peer-reviewed publications reported soil-transmitted helminth infection prevalence data in Bolivia [33-39]. For the current investigation, additional data were obtained from a 2006 report of the Ministry of Health (MoH) in Bolivia [40].

We obtained relevant prevalence data for *A. lumbricoides*, *T. trichiura*, and hookworm for 49, 49, and 47

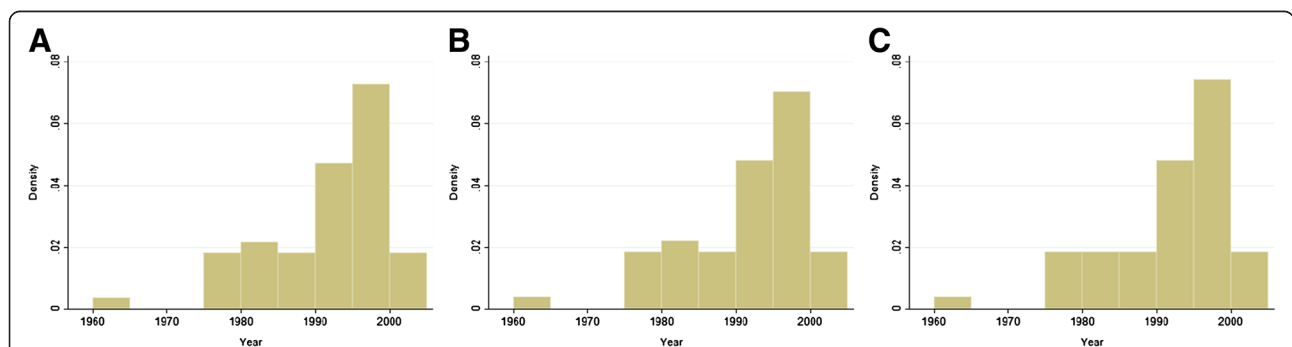


Figure 2 Frequency distribution of the survey periods in Bolivia for *A. lumbricoides* (A), *T. trichiura* (B), and hookworm (C).

Table 3 Variables selected by the geostatistical variable selection approach

	<i>A. lumbricoides</i> infection			<i>T. trichiura</i> infection			Hookworm infection		
Group 1									
Home with indoor plumbing ¹	0	0	0	0	0	0	0	0	0
People with drinking water at home ¹	0	0	0	0	0	0	0	0	0
Pipe network	0	0	0	0	0	0	0	0	0
Population with high quality of life	0	0	0	0	0	0	0	0	0
Population with UBN	0	0	0	0	0	0	0	0	0
Population with sanitation at home	0	0	0	0	X	0	0	0	0
Group 2									
Population with material UBN	0	0	0	0	0	0	0	0	0
Population with low quality of life	0	0	0	0	0	0	0	0	0
Group 3									
Minimum temperature coldest month ^{1,2}	0	0	0	0	0	0	X	0	X
Altitude	0	0	0	X	0	0	0	0	0
Annual temperature	0	0	0	0	X	0	0	0	0
Maximum temperature warmest month	0	0	0	0	0	0	0	0	0
Temperature wettest quarter	0	0	0	0	0	0	0	X	0
Temperature driest quarter	0	0	0	0	0	0	0	0	0
Temperature warmest quarter	0	0	0	0	0	0	0	0	0
Temperature coldest quarter	0	0	0	0	0	0	0	0	0
Group 4									
Temperature annual range ³	0	0	0	0	0	0	0	0	0
Temperature diurnal range	0	0	0	0	0	X	0	0	0
Group 5									
Annual precipitation ^{1,2,3}	0	0	0	0	0	0	0	0	0
Precipitation wettest month ^{1,2}	0	0	0	0	0	0	0	0	0
Precipitation wettest quarter ^{1,2}	X	0	0	0	0	0	0	0	0
Precipitation driest month ^{2,3}	0	0	0	0	0	0	0	0	0
Precipitation driest quarter ²	0	0	0	0	0	0	0	0	0
Precipitation warmest quarter ³	0	0	0	0	0	0	0	0	0
Precipitation coldest quarter ²	0	0	0	0	0	0	0	0	0
Group 6									
Enhanced vegetation index	0	0	0	0	0	0	0	0	0
Normalized difference vegetation index	0	0	0	0	0	0	0	0	X
Moderately correlated									
Soil acidity ^{1,3}	0	0	X	0	0	0	0	0	0
Precipitation seasonality ^{1,3}	0	0	0	0	0	0	0	0	0
Soil moisture ²	0	0	0	0	0	0	0	0	0
Isothermality	0	0	0	0	0	0	0	0	0
Temperature seasonality	0	0	0	0	0	0	0	0	0
Human influence index	0	0	0	0	0	0	0	0	0
Infant mortality rate	0	0	0	0	0	0	0	0	0
Human development index	0	0	0	0	0	0	0	0	0
Population with education UBN	0	0	0	0	0	0	0	0	0
Population with overcrowding UBN	0	0	0	0	0	0	0	0	0

Table 3 Variables selected by the geostatistical variable selection approach (Continued)

Population with sanitation UBN	0	0	0	0	0	0	0	0	0
Population with light at home	0	0	0	0	X	0	0	0	0
Unemployment rate	0	0	0	0	0	0	0	0	0
Posterior probability [%]	42.2	5.9	2.9	10.1	6.0	5.2	10.2	4.7	2.0

¹Categorised for *A. lumbricoides*; ²categorised for *T. trichiura*; ³categorised for hookworm; X (selected), 0 (not selected).

The best three models selected by the geostatistical variable selections are presented for each soil-transmitted helminth species, together with their posterior probabilities.

survey locations, respectively, covering the period from 1960 to 2010. The frequency distribution of the surveys, stratified by helminth species, is given in Figure 2. Six surveys out of 49 were reported at municipality level (administrative level 3) and were assigned to the centroid of their municipality. The remaining 43 locations were reported at school or village level and were therefore

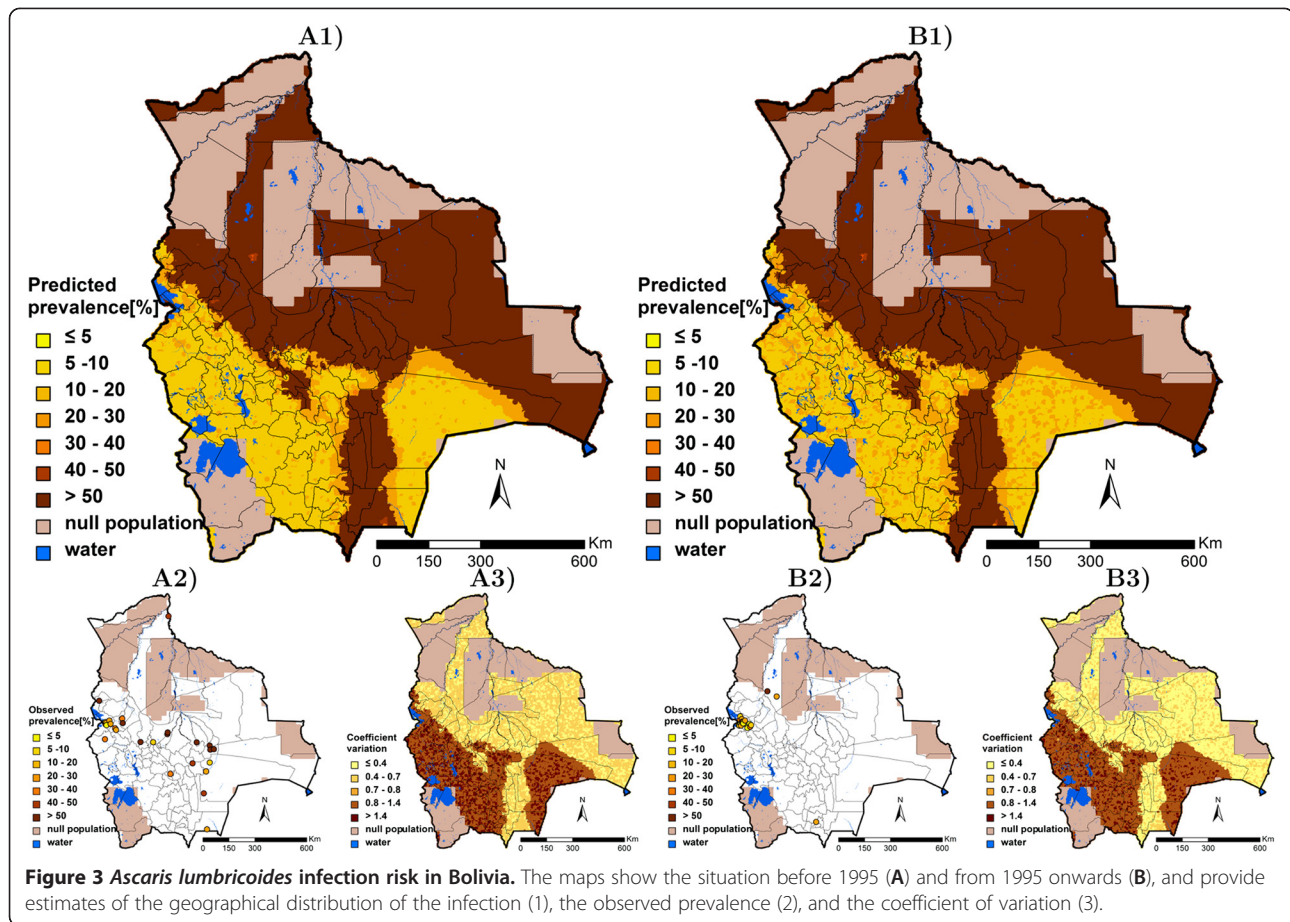
considered as point data. Most of the studies (71%) explicitly screened school-aged children (the remaining studies are either referring to entire populations or provide no information on the age range of the participants). With regard to the diagnosis of soil-transmitted helminthiasis, 47% of the studies used the WHO-recommended Kato-Katz technique [41], whereas in 21

Table 4 Parameter estimates of non-spatial bivariate and Bayesian geostatistical logistic models with environmental and socio-economic predictors

	Bivariate non-spatial		Geostatistical model	
	OR [†]	95% CI [†]	OR [†]	95% BCI [†]
<i>A. lumbricoides</i> infection				
Survey period				
Before 1995	1.00		1.00	
1995 onwards	0.26	(0.24; 0.29)*	0.94	(0.64; 1.42)
Precipitation wettest quarter (mm)				
<350	1.00		1.00	
350-400	1.42	(1.23; 1.66)*	1.32	(0.56; 2.81)
≥400	12.25	(10.95; 13.70)*	12.52	(5.05; 25.56)*
			Median	95% BCI[†]
σ_{sp}^2			1.11	(0.72; 2.00)
Range (km)			9.2	(1.3; 63.0)
<i>T. trichiura</i> infection				
Survey period				
Before 1995	1.00		1.00	
1995 onwards	0.33	(0.29; 0.37)*	0.85	(0.55; 1.30)
Altitude	0.33	(0.31; 0.36)*	0.37	(0.26; 0.56)*
			Median	95% BCI[†]
σ_{sp}^2			1.29	(0.77; 2.23)
Range (km)			28.7	(3.2; 80.2)
Hookworm infection				
Survey period				
Before 1995	1.00		1.00	
1995 onwards	0.45	(0.41; 0.50)*	0.72	(0.12; 4.19)
Minimum temperature coldest month	6.25	(5.81; 6.72)*	11.35	(5.00; 22.20)*
			Median	95% BCI[†]
σ_{sp}^2			3.07	(1.50; 7.44)
Range (km)			128.4	(39.8; 387.5)

[†]OR: odds ratio; 95% CI: lower and upper bound of a 95% confidence interval; 95% BCI: lower and upper bound of a 95% Bayesian credible interval.

*Significant based on 95% CI or 95% BCI.

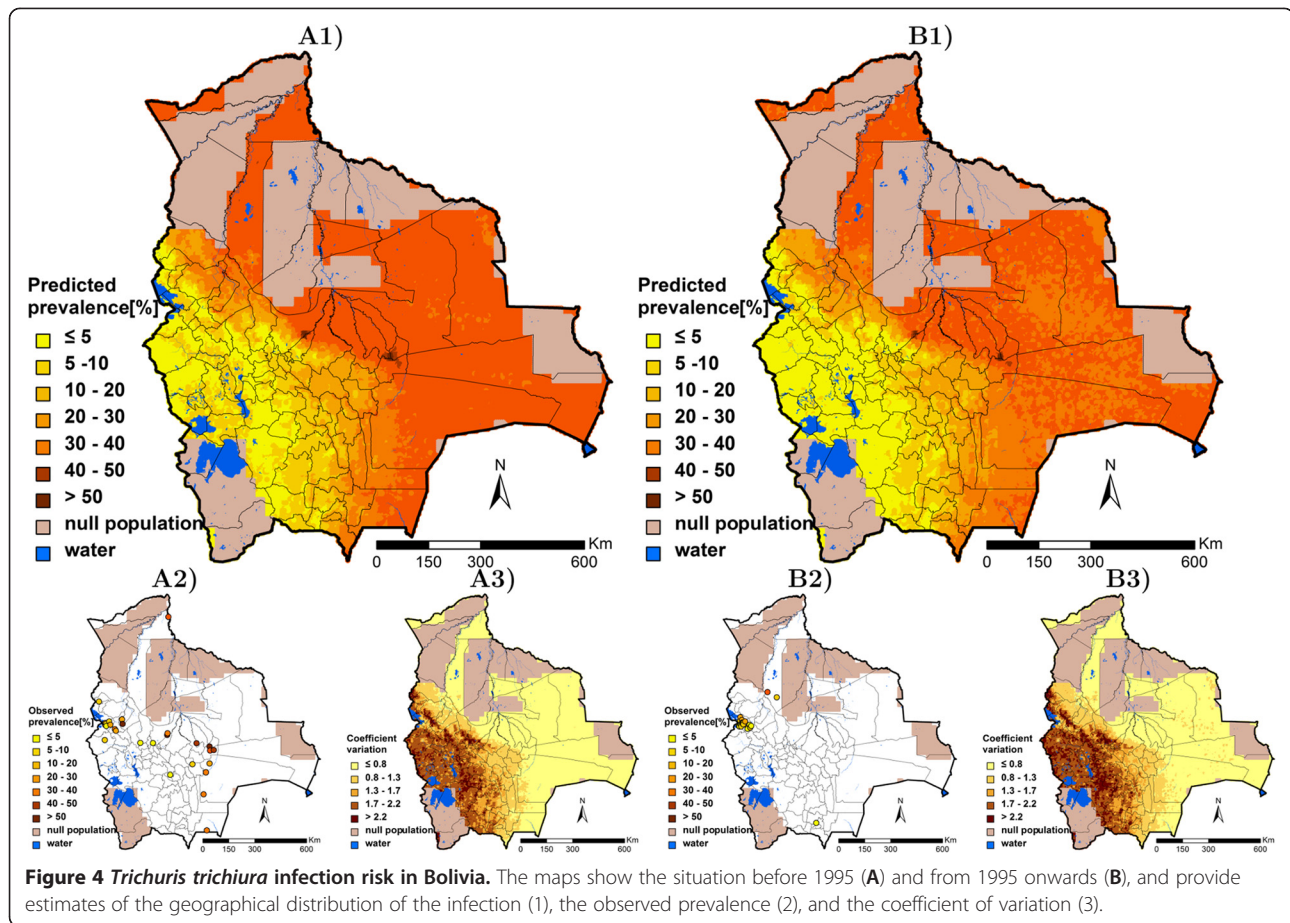


locations the diagnostic approach was not stated, and in five locations other diagnostic techniques were utilised.

Table 3 summarises, for each helminth species, the three best models resulting from the geostatistical variable selection. For *A. lumbricoides*, the model based on precipitation of the wettest quarter has the highest posterior probability of 42.2%. For *T. trichiura* the best model included altitude (posterior probability = 10.1%), while for hookworm, the model with the highest posterior probability (10.2%) included the minimum temperature during the coldest month. Results of the geostatistical logistic regressions, together with estimates of the bivariate non-spatial associations, are presented in Table 4. Precipitation of the wettest quarter above 400 mm had a positive effect on the odds of *A. lumbricoides* infection risk; hookworm infection risk was positively associated to the minimum temperature during the coldest month, and the higher the altitude, the lower the odds of *T. trichiura* infection. Although the risk of infection with the three helminth species decreased after 1995, this effect was not important in the spatial models as reflected by the 95% BCI of the odds ratio estimates. Figures 3, 4, and 5 show the geographical distribution of the predicted risks for each of the three soil-transmitted helminth species before and after 1995,

the corresponding standard deviation of the predictive distribution and the raw survey data. Maps of all predictors involved in the final geostatistical models are shown in Figure 6. Bolivia presents generally a lower risk of soil-transmitted helminthiasis in the south-western part of the country, where high altitude brings unsuitable climatic conditions for the development of the parasites. For the three soil-transmitted helminth infections, the maps of the posterior standard deviation reflect the pattern of the predicted risk. However, we note that for hookworm, where the spatial correlation is more important (spatial range estimated to 128.4 km), the standard deviation was also low in areas surrounding the survey locations, suggesting less uncertainty in the estimation of the spatial random effect in the neighbourhood of observed data. Figure 7 shows that the risks of *A. lumbricoides*, *T. trichiura* and hookworm infection are correctly predicted within 95% BCIs for 90%, 90%, and 80%, respectively.

Table 5 shows the total amount of treatment required on a yearly basis and the associated cost when the calculation is based on soil-transmitted helminth infection risk estimates, aggregated to various administrative levels. The estimated number of children targeted increases from

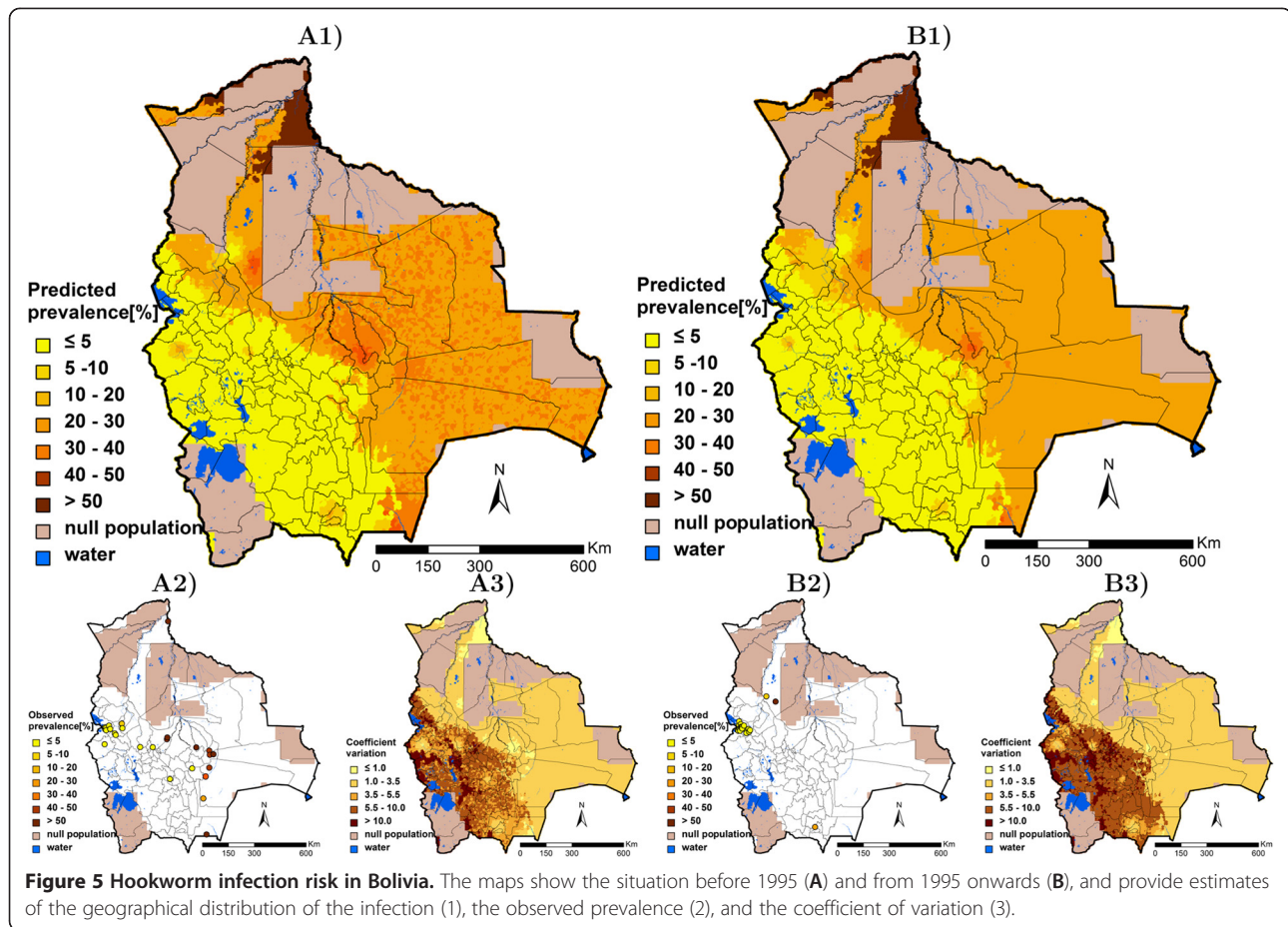


1,481,605 to 2,180,101, depending on the administrative level at which the risk is aggregated. However, the number of treatments required remains quite stable, indicating large spatial heterogeneity of the infection risk within the units. Model-based predictions and estimates of number of school-aged children infected with the three soil-transmitted helminth species, aggregated at province and country level, are presented in the Additional file 1. The estimated prevalence for *A. lumbricoides*, *T. trichiura*, and hookworm infection is 38.0%, 19.3%, and 11.4%, respectively. Taking the three soil-transmitted helminth species together, we estimate that 48.4% of the school-aged population is infected with at least one species, assuming independence of the three soil-transmitted helminth infections. The highest number of school-aged children needing treatment is concentrated in the densely populated Andrés Ibáñez province, while the highest risk for the three soil-transmitted helminths taken together is predicted for the Vaca Díez province.

Discussion

We present spatially explicit estimates of the risk and number of school-aged children infected with the three common soil-transmitted helminths in Bolivia using a

rigorous geostatistical variable selection approach. Survey data were extracted from the literature, geo-referenced, and made public via the open-access GNTD database. Our study also identified important data needs and gaps. For example, most of the surveys were conducted along the sub-Andean region. On the other hand, only few survey locations were available in the less densely populated highlands and in the northern tropical areas. Rigorous geostatistical variable selection methods have been used to identify environmental and socioeconomic determinants that govern the distribution of soil-transmitted helminth infection in Bolivia. The country, nestled between the high Andean peaks (on the West) and the Amazon forest (on the East), presents specific ecological characteristics that shape helminth cycles in a complex way. High altitude and diverse topography, as well as the paucity of weather stations in remote areas can introduce interpolation bias in the climatic factors used in our analysis [42]. Bayesian variable selection helped in identifying the potential factors influencing the geographical distribution of the three common soil-transmitted helminth species. Our methodology enabled us to explore all possible models arising from 40 climatic and socioeconomic predictors, while accounting for spatial correlation in the data.



The parameterisation of the prior distribution of the regression coefficients as developed in this manuscript selects the best predictors among highly correlated ones, while addressing non-linearity. The selected predictors are plausible in terms of helminth biology, ecology, and epidemiology. Indeed, the distribution of *A. lumbricoides* was positively associated with precipitation above 400 mm during the wettest month. High humidity is related with faster development of parasite eggs in the free environment. Low humidity, on the other hand, can cease embryonation of *A. lumbricoides* [43,44]. The positive association between the minimum temperature of the coldest month and the prevalence of hookworm reflects inhibition of the development of the eggs by hostile cold temperatures [3,45]. The preventive effect of high altitude on *T. trichiura* infection risk has already been highlighted and explained by subsequent unfavourable temperature, which limits the transmission [46]. The three soil-transmitted helminth infection risks did not decrease significantly over time and we are unsure whether Bolivia has implemented integrated control measures. In the absence of preventive chemotherapy and/or sanitation improvement, environmental contamination is considerable,

which may explain our observations of fairly constant infection rates over time [47,48].

The transmission of soil-transmitted helminthiasis occurs via contaminated food or fingers (*A. lumbricoides* and *T. trichiura*), or through the skin by walking on larvae-infested soil (hookworm). People living in poor conditions are more exposed due to their living conditions, the lack of access to clean water, sanitation, and health facilities [49]. Hence, we would have expected soil-transmitted helminth infections to be associated with some of the socioeconomic factors investigated, such as the ones related to sanitation [50]. However, none of the socioeconomic variables were picked up by our geostatistical variable selection approach. This may indicate that our socioeconomic proxies were not able to capture the socioeconomic disparities across the country when aggregated at district or municipality scales. Historical data are aggregated over villages or larger areas and they are rarely available at household level. Often variation in socioeconomic status is larger within rather than between locations, and hence, it may be harder for socioeconomic data to explain geographical differences.

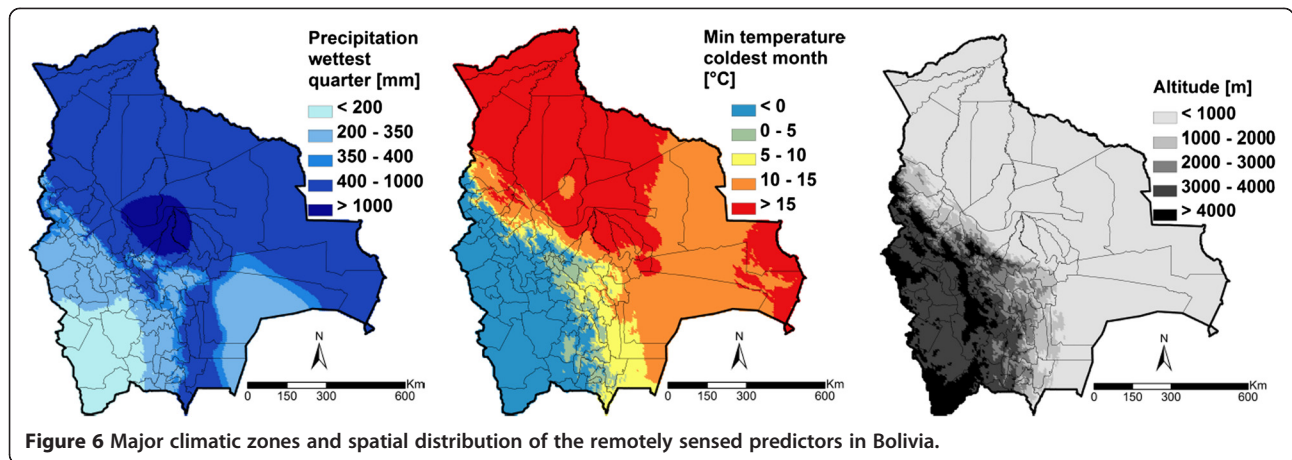


Figure 6 Major climatic zones and spatial distribution of the remotely sensed predictors in Bolivia.

Bolivian soil also exhibits specific characteristics such as presence of salt and soil compaction arising from livestock farming, which may affect the transmission of soil-transmitted helminths. In our analysis, we explored different soil predictors, including land cover, the vegetation indices EVI and NDVI, soil acidity and soil moisture. However, these factors failed to explain the distribution of the infection risks.

The population of Bolivia is mainly concentrated in and around the three main cities La Paz, Santa Cruz, and Cochabamba, where large parts of the country are uninhabited. The absence of human hosts breaks parasite life cycles. Thus, although environmental conditions may be suitable for parasite survival, there is no risk of transmission. To avoid potential misinterpretation, we clearly delineate areas where no humans live.

The predicted risk maps for the three common soil-transmitted helminth species in Bolivia should be interpreted with caution, particularly for areas characterised by only sparse survey data or poor coverage. Sample design is not optimised regarding the surveyed population; 29% of the data did not report the survey type (school-aged, community-based) and might bias the raw prevalence, as it is widely acknowledged that school-aged children are at higher risk of soil-transmitted helminths, particularly *A. lumbricoides* and *T. trichiura*, than their older counterparts [51]. Slightly less than half of the surveys stated the use of the WHO-recommended Kato-Katz technique for soil-transmitted helminth diagnosis [41,52]. Heterogeneity in the data regarding the sensitivities and specificities of the diagnostic methods might introduce measurement errors in the raw prevalence data. Furthermore, a zero hookworm prevalence was reported for 60% of the survey data. While these data suggest the non-endemicity of hookworm, the diagnostic approach might have underestimated the “true” prevalence due to diagnostic dilemmas [53,54]. Indeed, single Kato-Katz thick smears, low intensity infections, and delays in stool processing compromise sensitivity, particularly for hookworm diagnosis [55,56]. Giardina *et al.* [24] developed a zero-inflated binomial geostatistical

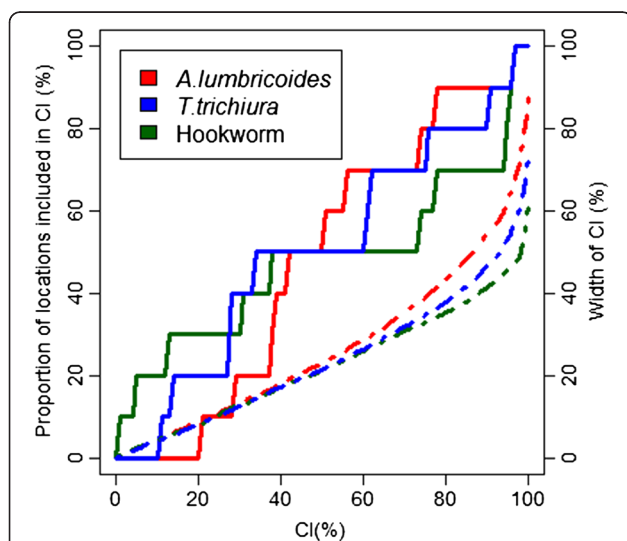


Figure 7 Proportion of locations with observed prevalence falling within credible intervals of the posterior predictive distribution with probability coverage varying from 1% to 100%.

Table 5 Yearly estimation of school-aged children needing preventive chemotherapy against soil-transmitted helminthiasis in Bolivia

	5 × 5 km	Municipality	Province	Department
Number of children targeted	1,481,605	1,749,136	1,907,658	2,180,101
Number of treatment required	2,894,936	2,868,016	2,847,604	3,013,413
Cost (US\$)	723,734	717,003	711,901	753,353

Estimates are based on prevalence predicted at pixels of 5 × 5 km resolution and aggregated over different administrative levels.

model to estimate malaria burden when data contain a high proportion of zeros. This model could be adopted for soil-transmitted helminth infection and implemented in Bolivia as soon as more survey data become available. In addition, data in the literature usually report on hookworm prevalence, without differentiation of the species (*A. duodenale* and *N. americanus*). It would be interesting to analyse the two species separately, as they may have different ecological preferences.

Our study indicates that in Bolivia almost half (48.4%) of the population is infected with at least one of the three common soil-transmitted helminths. Our empirical-based estimates suggested that a total of 2,868,016 annualised treatments are required for preventive chemotherapy targeting school-aged children at the level of the municipalities. This estimate is higher than the one previously reported in the country (4,774,672 treatments for a 5-year campaign [9,32]). Population dynamic models [57-59] could be used to predict the effect of preventive chemotherapy on the epidemiological pattern of the three common soil-transmitted helminths, to evaluate the community effectiveness of the programme and to plan the duration of control interventions.

Conclusions

In the framework of a preventive chemotherapy strategy, reliable maps of the distribution of infection risk and disease burden are needed to enhance cost-effectiveness of the interventions. Our high resolution estimates are based on existing data and their scarcity may raise doubts on the value of modelling of the disease distribution. However, soil-transmitted helminth infections are driven by environmental factors and, in the absence of interventions, the existing data can establish the relation between the risk of infection and climate. Hence, the risk maps produced are able to identify areas of high infection. Validation indicated that the models had good predictive ability. We therefore believe that the estimated maps can provide important inputs in the sampling design of a national survey by indicating the areas requiring more surveys. Hence, a coherent and optimally designed national survey is warranted to more accurately estimate the distribution and the number of people at risk of infection, so that preventive chemotherapy and other control measures can be optimally targeted.

Additional file

Additional file 1: Population-adjusted prevalence and estimated number of infected children (5–14 years old) with the three common soil-transmitted helminth (STH) infections, stratified by province and by country, for the period 1995 onwards, based on 2010 population estimates with 95% Bayesian credible interval (BCI).

Abbreviations

BCI: Bayesian credible interval; CI: Confidence interval; EVI: Enhanced vegetation index; GIS: Geographical information system; GNTD: Global neglected tropical diseases (database); HDI: Human development index; HII: Human influence index; IMR: Infant mortality rate; MCMC: Markov chain Monte Carlo; MoH: Ministry of Health; NDVI: Normalized difference vegetation index; OR: Odds ratio; PAHO: Pan American Health Organization; UBN: Unsatisfactory basic needs; WHO: World Health Organization.

Competing interests

The authors declare that they have no competing interests.

Authors' contributions

FC participated in data acquisition, analysed the data and wrote the manuscript. RGCS, JBM, MEB and PN participated in the environmental and socioeconomic data collection and helped interpreting their meaning. PV contributed to data analysis. PV and JU designed the study, helped interpreting the results, revised the manuscript and provided important intellectual content. All authors read and approved the manuscript.

Acknowledgements

The authors are grateful for financial support of the Pan American Health Organization (PAHO) and the UBS Optimus Foundation. RGCS received further financial support from the Swiss Brazilian Joint Research Programme (BSJRP 011008). We thank the reviewers for providing valuable comments in an earlier version of the manuscript.

Author details

¹Department of Epidemiology and Public Health, Swiss Tropical and Public Health Institute, P.O. Box, CH-4002 Basel, Switzerland. ²University of Basel, P. O. Box, CH-4003 Basel, Switzerland. ³School of Veterinary Medicine, Louisiana State University, Baton Rouge, LA 70803, USA. ⁴Preventive Medicine Department, Federal University of Bahia, Salvador, Bahia 40110-060, Brazil.

Received: 10 November 2012 Accepted: 8 May 2013

Published: 25 May 2013

References

1. Bethony J, Brooker S, Albonico M, Geiger SM, Loukas A, Diemert D, Hotez PJ: **Soil-transmitted helminth infections: ascariasis, trichuriasis, and hookworm.** *Lancet* 2006, **367**:1521–1532.
2. Schneider MC, Aguilera XP, da Silva Junior JB, Ault SK, Najera P, Martinez J, Requejo R, Nicholls RS, Yadon Z, Silva JC: **Elimination of neglected diseases in Latin America and the Caribbean: a mapping of selected diseases.** *PLoS Negl Trop Dis* 2011, **5**:e964.
3. Pullan RL, Brooker SJ: **The global limits and population at risk of soil-transmitted helminth infections in 2010.** *Parasit Vectors* 2012, **5**:81.
4. Hotez PJ, Molyneux DH, Fenwick A, Savioli L, Takeuchi T: **A global fund to fight neglected tropical diseases: is the G8 Hokkaido Toyako 2008 summit ready?** *PLoS Negl Trop Dis* 2008, **2**:e220.
5. PAHO: 61st session of the regional committee: *Elimination of neglected diseases and other poverty-related infections. Resolution CD49.R19. Forty-ninth Directing Council.* Washington DC: Pan American Health Organization; 2009.
6. Simoonga C, Utzinger J, Brooker S, Vounatsou P, Appleton CC, Stensgaard AS, Olsen A, Kristensen TK: **Remote sensing, geographical information system and spatial analysis for schistosomiasis epidemiology and ecology in Africa.** *Parasitology* 2009, **136**:1683–1693.
7. Soares Magalhães RJ, Clements ACA, Patil AP, Gething PW, Brooker S: **The applications of model-based geostatistics in helminth epidemiology and control.** *Adv Parasitol* 2011, **74**:267–296.
8. WHO: *Country cooperation strategy at a glance.* Geneva: World Health Organization; 2007.
9. Inter-American Development Bank, Pan American Health Organization PAHO/WHO, Sabin Vaccine Institute: *A call to action: addressing soil-transmitted helminths in Latin America and the Caribbean.* 2011. Available at: <http://bit.ly/faHFO2>; accessed: 3 May 2013.
10. Brooker S, Beasley M, Ndinarmotan M, Madjiouroum EM, Baboguel M, Djenguinabe E, Haye SI, Bundy DAP: **Use of remote sensing and a geographical information system in a national helminth control programme in Chad.** *Bull World Health Organ* 2002, **80**:783–789.

11. Raso G, Matthys B, N'Goran EK, Tanner M, Vounatsou P, Utzinger J: **Spatial risk prediction and mapping of *Schistosoma mansoni* infections among schoolchildren living in western Côte d'Ivoire.** *Parasitology* 2005, **131**:97–108.
12. Clements ACA, Firth S, Dembelé R, Garba A, Touré S, Sacko M, Landouré A, Bosqué-Oliva E, Barnett AG, Brooker S, et al: **Use of Bayesian geostatistical prediction to estimate local variations in *Schistosoma haematobium* infection in western Africa.** *Bull World Health Organ* 2009, **87**:921–929.
13. Schur N, Hürlimann E, Garba A, Traoré MS, Ndir O, Ratard RC, Tchuem Tchuente LA, Kristensen TK, Utzinger J, Vounatsou P: **Geostatistical model-based estimates of schistosomiasis prevalence among individuals aged \leq 20 years in West Africa.** *PLoS Negl Trop Dis* 2011, **5**:e1194.
14. Malone JB: **Biology-based mapping of vector-borne parasites by geographic information systems and remote sensing.** *Parassitologia* 2005, **47**:27–50.
15. Mudenda NB, Malone JB, Kearney MT, Mischler PD, Nieto P, McCarroll JC, Vounatsou P: **Modelling the ecological niche of hookworm in Brazil based on climate.** *Geospat Health* 2012, **6**:S111–S123.
16. Stensgaard AS, Utzinger J, Vounatsou P, Hürlimann E, Schur N, Saarnak CFL, Simoonga C, Mubita P, Kabatereine NB, Tchuem Tchuente LA, et al: **Large-scale determinants of intestinal schistosomiasis and intermediate host snail distribution across Africa: does climate matter?** *Acta Trop* 2013. in press; doi:10.1016/j.actatropica.2011.11.010.
17. Diggle PJ, Tawn JA, Moyeed RA: **Model-based geostatistics.** *J R Stat Soc Ser C Appl Stat* 1998, **47**:299–326.
18. Raso G, Vounatsou P, Gosoniou L, Tanner M, N'Goran EK, Utzinger J: **Risk factors and spatial patterns of hookworm infection among schoolchildren in a rural area of western Côte d'Ivoire.** *Int J Parasitol* 2006, **36**:201–210.
19. Clements ACA, Bosqué-Oliva E, Sacko M, Landouré A, Dembelé R, Traoré M, Coulibaly G, Gabrielli AF, Fenwick A, Brooker S: **A comparative study of the spatial distribution of schistosomiasis in Mali in 1984–1989 and 2004–2006.** *PLoS Negl Trop Dis* 2009, **3**:e431.
20. Clements ACA, Deville MA, Ndayishimiye O, Brooker S, Fenwick A: **Spatial co-distribution of neglected tropical diseases in the East African Great Lakes region: revisiting the justification for integrated control.** *Trop Med Int Health* 2010, **15**:198–207.
21. Schur N, Hürlimann E, Stensgaard AS, Chimfwembe K, Mushinge G, Simoonga C, Kabatereine NB, Kristensen TK, Utzinger J, Vounatsou P: **Spatially explicit *Schistosoma* infection risk in eastern Africa using Bayesian geostatistical modelling.** *Acta Trop* 2013. in press; doi:10.1016/j.actatropica.2011.10.006.
22. Chammartin F, Scholte RGC, Guimaraes LH, Tanner M, Utzinger J, Vounatsou P: **Soil-transmitted helminth infection in South America: a systematic review and geostatistical meta-analysis of survey data.** *Lancet Infect Dis* 2013, **13**:505–18.
23. Scholte RGC, Schur N, Bavia ME, Carvalho EM, Chammartin F, Utzinger J, Vounatsou P: **Spatial analysis and risk mapping of soil-transmitted helminths in Brazil, using Bayesian geostatistical models.** *Geospat Health* 2013. in press.
24. Giardina F, Gosoniou L, Konate L, Diouf MB, Perry R, Gaye O, Faye O, Vounatsou P: **Estimating the burden of malaria in Senegal: Bayesian zero-inflated binomial geostatistical modeling of the MIS 2008 data.** *PLoS One* 2012, **7**:e32625.
25. Hürlimann E, Schur N, Boutsika K, Stensgaard AS, Laserna de Himpel M, Ziegelbauer K, Laizer N, Camenzind L, Di Pasquale A, Ekpo UF, et al: **Toward an open-access global database for mapping, control, and surveillance of neglected tropical diseases.** *PLoS Negl Trop Dis* 2011, **5**:e1404.
26. George EI, McCulloch RE: **Variable selection via Gibbs sampling.** *J Am Stat Assoc* 1993, **88**:881–889.
27. Scheipl F, Fahrmeir L, Kneib T: **Spike-and-slab priors for function selection in structured additive regression models.** *J Am Stat Assoc* 2012, **107**:1518–1532.
28. Chammartin F, Hürlimann E, Raso G, N'Goran EK, Utzinger J, Vounatsou P: **Statistical methodological issues in mapping historical schistosomiasis survey data.** *Acta Trop* 2013. in press; doi:10.1016/j.actatropica.2013.04.012.
29. Raftery AE, Lewis S: **How many iterations in the Gibbs sampler?** *Bayesian Stat* 1992, **4**:763–773.
30. WHO: **Preventive chemotherapy in human helminthiasis: coordinated use of anthelmintic drugs in control interventions: a manual for health professionals and programme managers.** Geneva: World Health Organization; 2006.
31. Schur N, Vounatsou P, Utzinger J: **Determining treatment needs at different spatial scales using geostatistical model-based risk estimates of schistosomiasis.** *PLoS Negl Trop Dis* 2012, **6**:e1773.
32. Bitran R, Martorell B, Escobar L, Munoz R, Glassman A: **Controlling and eliminating neglected diseases in Latin America and the Caribbean.** *Health Aff (Millwood)* 2009, **28**:1707–1719.
33. Basset D, Gaumerais H, Basset-Pougnat A: **Intestinal parasitoses in children of an Indian community of Bolivian altiplano.** *Bull Soc Pathol Exot* 1986, **79**:237–246.
34. Benefice E, Monroy SL, Jiménez S, López R: **Nutritional status of Amerindian children from the Beni River (lowland Bolivia) as related to environmental, maternal and dietary factors.** *Publ Health Nutr* 2006, **9**:327–335.
35. Cancrini G, Bartoloni A, Paradisi F, Nunez LE: **Parasitological observations on three Bolivian localities including rural communities, cities and institutions.** *Ann Trop Med Parasitol* 1989, **83**:591–594.
36. Cancrini G, Bartoloni A, Zaffaroni E, Guglielmetti P, Gamboa N, Nicoletti A, Genchi C: **Seroprevalence of *Toxocara canis*-IgG antibodies in two rural Bolivian communities.** *Parassitologia* 1998, **40**:476–475.
37. Esteban JG, Flores A, Aguirre C, Strauss W, Angles R, Mas-Coma S: **Presence of very high prevalence and intensity of infection with *Fasciola hepatica* among Aymara children from the Northern Bolivian Altiplano.** *Acta Trop* 1997, **66**:1–14.
38. Flores A, Esteban JG, Angles R, Mas-Coma S: **Soil-transmitted helminth infections at very high altitude in Bolivia.** *Trans R Soc Trop Med Hyg* 2001, **95**:272–277.
39. Tanner S: **A population in transition: health, culture change, and intestinal parasitism among the Tsimane of lowland Bolivia.** PhD Thesis; University of Michigan, Anthropology department; 2005.
40. Mollinedo S, Prieto C: **El enteroparasitismo en Bolivia.** La Paz Elite: Ministerio de Salud y Deportes; 2006.
41. Montresor A, Crompton DWT, Hall A, Bundy DAP: **Guidelines for the evaluation of soil-transmitted helminthiasis and schistosomiasis at community level.** Geneva: World Health Organization; 1998.
42. Hijmans RJ, Cameron SE, Parra JL, Jones PG, Jarvis A: **Very high resolution interpolated climate surfaces for global land areas.** *Int J Climatol* 2005, **25**:1965–1978.
43. Otto GF: **A study of the moisture requirements of the eggs of the horse, the dog, human and pig ascarids.** *Am J Hyg* 1929, **10**:497–520.
44. Spindler LA: **The relation of moisture to the distribution of human *Trichuris* and *Ascaris*.** *Am J Hyg* 1929, **10**:476–496.
45. Smith G, Schad GA, Warren KS: **The ecology of the free-living stages: a reappraisal.** In *Hookworm disease-current status and new directions*. London: Taylor and Francis; 1990:89–104.
46. Bundy DAP, Cooper ES: ***Trichuris* and trichuriasis in humans.** *Adv Parasitol* 1989, **28**:107–173.
47. Hotez J, Fenwick A, Savioli L, Molyneux DH: **Rescuing the bottom billion through control of neglected tropical diseases.** *Lancet* 2009, **373**:1570–1575.
48. Smits HL: **Prospects for the control of neglected tropical diseases by mass drug administration.** *Expert Rev Anti Infect Ther* 2009, **7**:37–56.
49. de Silva NR, Brooker S, Hotez PJ, Montresor A, Engels D, Savioli L: **Soil-transmitted helminth infections: updating the global picture.** *Trends Parasitol* 2003, **19**:547–551.
50. Ziegelbauer K, Speich B, Müsezahl D, Bos R, Keiser J, Utzinger J: **Effect of sanitation on soil-transmitted helminth infection: systematic review and meta-analysis.** *PLoS Med* 2009, **9**:e1001162.
51. Albonico M, De Carneri I, Di Matteo L, Ghiglietti R, Toscano P, Uledi MK, Savioli L: **Intestinal parasitic infections of urban and rural children on Pemba Island: implications for control.** *Ann Trop Med Parasitol* 1993, **87**:579–583.
52. Speich B, Knopp S, Mohammed KA, Khamis IS, Rinaldi L, Cringoli G, Rollinson D, Utzinger J: **Comparative cost assessment of the Kato-Katz and FLOTAC techniques for soil-transmitted helminth diagnosis in epidemiological surveys.** *Parasit Vectors* 2010, **3**:71.
53. Knopp S, Mgeni AF, Khamis IS, Steinmann P, Stothard JR, Rollinson D, Marti H, Utzinger J: **Diagnosis of soil-transmitted helminths in the era of preventive chemotherapy: effect of multiple stool sampling and use of different diagnostic techniques.** *PLoS Negl Trop Dis* 2008, **2**:e331.
54. Bergquist R, Johansen MV, Utzinger J: **Diagnostic dilemmas in helminthology: what tools to use and when?** *Trends Parasitol* 2009, **25**:151–156.
55. Dacombe RJ, Crampin AC, Floyd S, Randall A, Ndhlovu R, Bickle Q, Fine PEM: **Time delays between patient and laboratory selectively affect accuracy of helminth diagnosis.** *Trans R Soc Trop Med Hyg* 2007, **101**:140–145.

56. Krauth SJ, Coulibaly JT, Knopp S, Traoré M, N'Goran EK, Utzinger J: **An in-depth analysis of a piece of shit: distribution of *Schistosoma mansoni* and hookworm eggs in human stool.** *PLoS Negl Trop Dis* 2012, **6**:e1969.
57. Anderson RM, May RM: **Helminth infections of humans: mathematical models, population dynamics, and control.** *Adv Parasitol* 1985, **24**:1–101.
58. Chan MS, Guyatt HL, Bundy DAP, Medley GF: **The development and validation of an age-structured model for the evaluation of disease control strategies for intestinal helminths.** *Parasitology* 1994, **109**:389–396.
59. Anderson R, Hollingsworth TD, Truscott J, Brooker S: **Optimisation of mass chemotherapy to control soil-transmitted helminth infection.** *Lancet* 2012, **379**:289–290.

doi:10.1186/1756-3305-6-152

Cite this article as: Chammartin *et al.*: Modelling the geographical distribution of soil-transmitted helminth infections in Bolivia. *Parasites & Vectors* 2013 **6**:152.

**Submit your next manuscript to BioMed Central
and take full advantage of:**

- Convenient online submission
- Thorough peer review
- No space constraints or color figure charges
- Immediate publication on acceptance
- Inclusion in PubMed, CAS, Scopus and Google Scholar
- Research which is freely available for redistribution

Submit your manuscript at
www.biomedcentral.com/submit

